

Nitro AN17-42  
EX90\_HKH

# LIFECYCLE EXTENSION GUIDE

Self-Repair . . . . . 1-1  
Disassembly Procedures . . . . . 1-3  
Electronic Boards Diagrams . . . . . 1-40  
Troubleshooting . . . . . 1-41  
FRU (Field Replaceable Unit) List . . . . . 1-42  
Software Update . . . . . 1-57  
Personal Data Removal . . . . . 1-58

# Self-Repair

---

This chapter highlights the limited self-repair capabilities of the product.

Prior performing self-repair, familiarize yourself with the Safety Guidelines and Recommended Equipment sections first as described in the chapter "[Disassembly Procedures](#)".

Depending on model, the following key components are eligible for self-repair (if applicable);

- Battery pack
- HDD / SSD module
- DIMM module(s)
- WLAN module
- LTE module

If a particular key component is listed and thus would be eligible for self-repair, but is not described in the "[Disassembly Procedures](#)" section, then this component is either not present on the respective model, or it is present but embedded on the motherboard and therefore not eligible for self-repair.

⇒ **NOTE:**

Do not attempt to replace other components than those listed above.

⇒ **NOTE:**

For replacement parts, always use only Acer certified components in order to safeguard quality, optimum system performance, stability and reliability of the product.

⇒ **NOTE:**

Any damage to the product that occur during self-repair, or which has occurred as a result of a careless or unsuccessful self-repair attempt, is not covered by the standard product warranty.

# System BIOS & Driver Updates

---

Visit <http://www.acer.com/support> to discover the available system BIOS and Drivers for this product. After selecting the desired country/language, either enter the model name or product serial number, or select the product from the list of suggested models in order to get access to product-specific software and documentation.

## To update the system BIOS:

- Download the desired system BIOS version from the website
- Unzip the downloaded file to your computer
- Double-click the extracted file in order to initiate the update process
- The update process itself is fully automated and its progress is visualized by means of a progress indicator
- A visual notification is shown when the update is complete

### ⇒ **NOTE:**



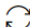

Upgrading the system BIOS incorrectly, or intermittence of the system BIOS update process could harm the product.

### ⇒ **NOTE:**

System BIOS upgrades or downgrades, if not performed by an Acer Service Center or authorized Service Partner, are at own risk.

## To update Drivers:

Run Windows Update in order to get the latest drivers from Acer:

- Select the Start  button
- Go to **Settings**  > **Update & Security**  > **Windows Update** 
- Available Drivers will automatically be listed on the screen. Press **Download** to start the download of the respective driver
- Installation of the driver will start automatically once the download is completed

# Software Recovery

---

This product has embedded software recovery tools which can be used to either perform a partial or full software recovery, but also to create a Factory Default recovery media.

For more information about the software recovery options, how to perform a software recovery or creating a Factory Default recovery media, please refer to the chapter "Recovery" which is available in the User Manual of the product.

### ⇒ **NOTE:**

In the event of not being able to create a Factory Default recovery media, it is possible to obtain a copy of the recovery media through Acer Customer Service (<http://www.acer.com/support>)

This is not a free of charge service.

# Disassembly Procedures

---

## Safety Guidelines

---

This chapter contains step by step procedures on how to remove and de-install components from the computer. Use the following safety guidelines to ensure your personal safety. Each procedure included in this chapter assumes that you are preparing your computer for recycling and disposal. **By performing any of these procedures you acknowledge that any remaining warranty applicable to your computer will be voided. Before you start any of the procedures in this chapter, make sure to read the following safety guidelines and the respective instructions within the chapter.**

### CAUTION!

- Turn off your computer and disconnect all power sources before opening the computer cover or panels.
- To avoid electrostatic discharge, ground yourself by using a wrist grounding strap or by periodically touching an unpainted metal surface at the same time as touching a connector on the back of the computer.
- Take off any metal objects on your arms or fingers such as bracelets, rings or watches and make sure your hands are completely dry. Even if your unit is unplugged, there may still be some remaining electric charge.
- If a component does not come out easily, do not forcefully remove it. Instead, check that you are removing it correctly and that no wires or other parts are in the way.
- When you disconnect a cable, pull on its connector or on its pull-tab, not on the cable itself. Some cables have connectors with locking tabs; if you are disconnecting this type of cable, press in on the locking tabs before you disconnect the cable.

## Recommended Equipment

---

The following equipment are recommended to do the following maintenance procedures:

- Wrist grounding strap and conductive mat
- Flat screwdriver
- Philips screwdriver
- Polydrive screwdriver
- Plastic tweezers
- Flat plastic pry

# WEEE Annex VII Component

These components are classified as requiring selective treatment:

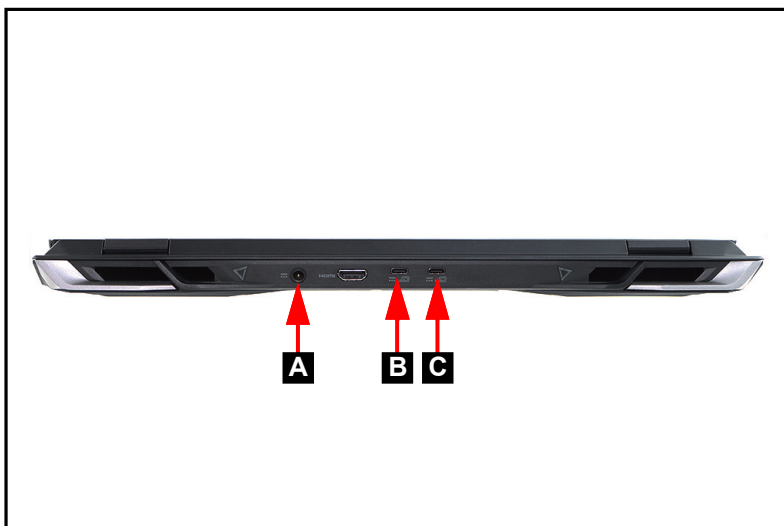
- Battery pack
- Transfer board
- SSD modules
- DIMM modules
- WLAN module
- RTC battery
- Mainboard
- Touchpad module
- USB board
- LCD panel

# Pre-disassembly Instructions

---

Do the following prior to starting any maintenance procedures:

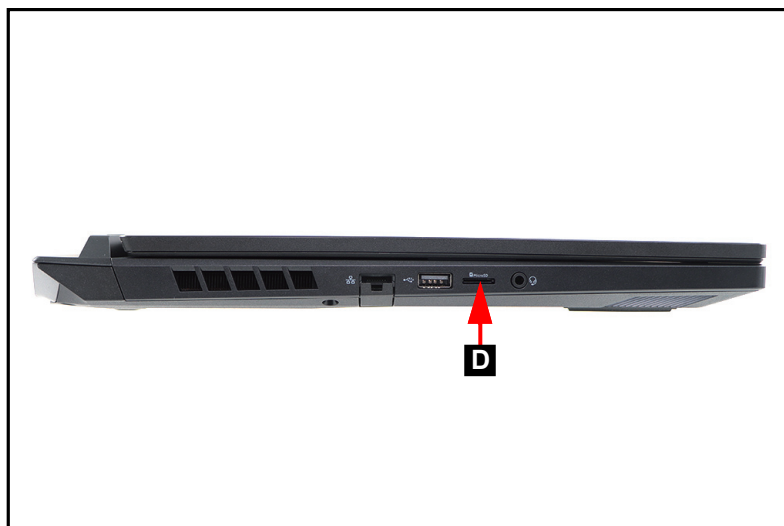
1. Place the system on a stable work surface.
2. Remove the AC adapter from the DC-in jack (A) or the power adapter from the USB Type-C port (B or C) as shown in [Figure 1-1](#).
3. Remove all cables from the system.



---

**Figure 1-1. Adapter Outlet**

4. Remove the microSD card from the microSD card slot (D) ([Figure 1-2](#)).



---

**Figure 1-2. MicroSD Card Removal**

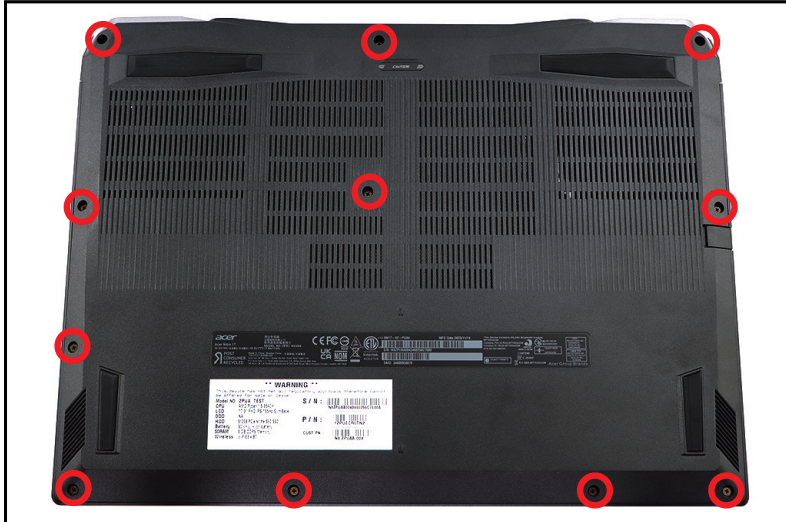
**⇒ NOTE:**

Make sure the system is completely powered off.

## Base Cover Removal

---

1. Remove eleven (11) screws from the base cover ([Figure 1-3](#)).



---

**Figure 1-3. Base Cover Removal**

2. Carefully pry up the base cover from the bottom edges to release the latches as shown in [Figure 1-4](#).



---

**Figure 1-4. Base Cover Removal**

3. Continue to release the remaining latches (Figure 1-5).



Figure 1-5. Base Cover Removal

4. Remove the base cover from the system (Figure 1-6).



Figure 1-6. Base Cover Removal

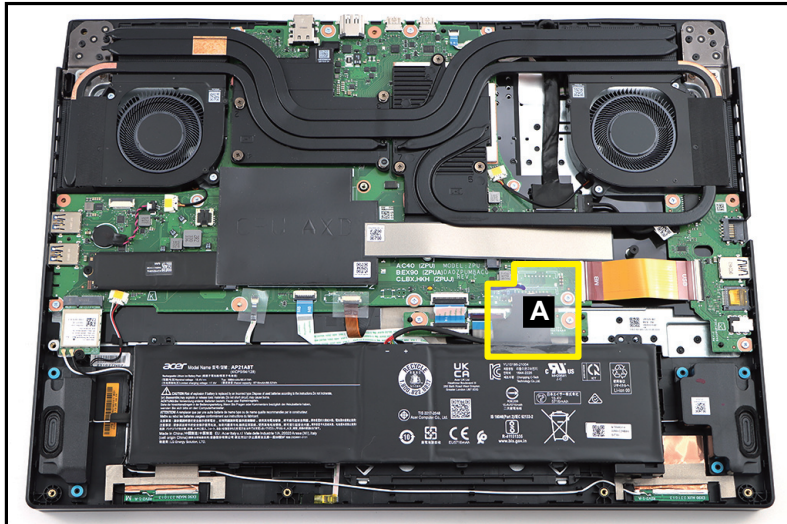
# Battery Pack Removal

---

## Prerequisite:

[Base Cover Removal](#)

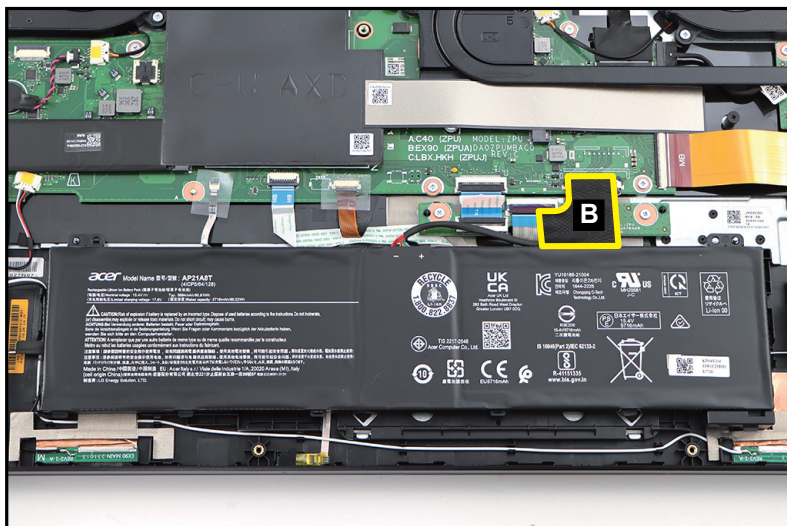
1. Detach the mylar (A) as shown in [Figure 1-7](#).



---

**Figure 1-7. Battery Pack Removal**

2. Detach the tape (B) securing the battery cable connection ([Figure 1-8](#)).



---

**Figure 1-8. Battery Pack Removal**

3. Disconnect the battery cable from the mainboard connector (C) (Figure 1-9).

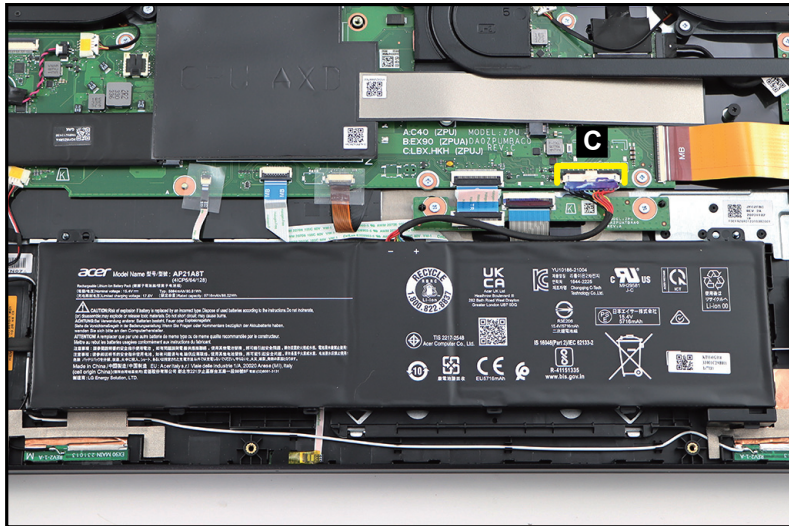


Figure 1-9. Battery Pack Removal

4. Lift the battery pack (D) to release it from the guide pins (E) and the compartment studs (highlighted with the green lines) (Figure 1-10). Then remove the battery pack.

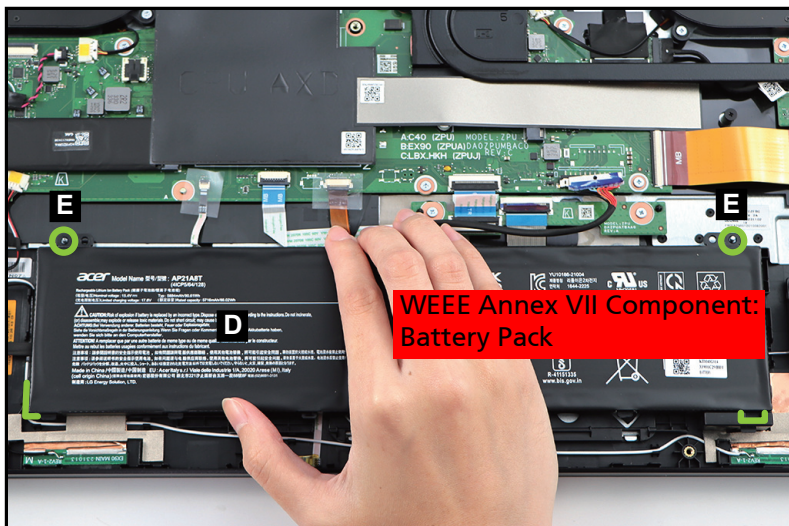


Figure 1-10. Battery Pack Removal

5. Remove one (1) screw securing the battery holder (Figure 1-11).

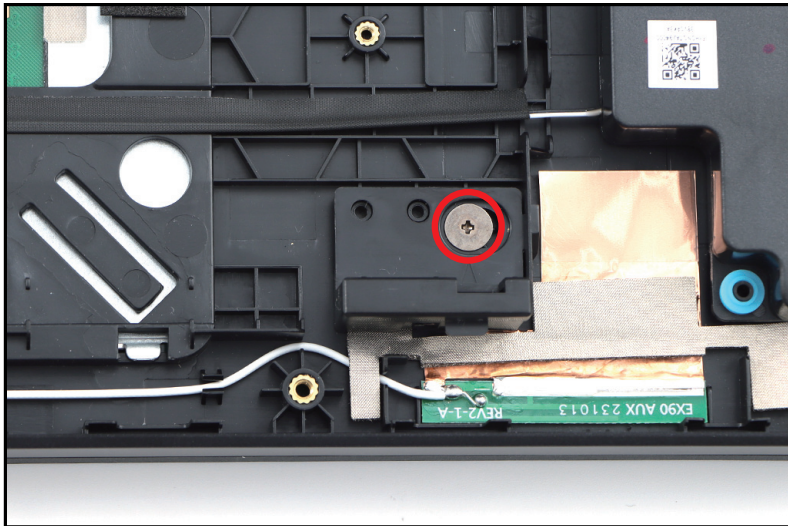


Figure 1-11. Battery Pack Removal

6. Lift the battery holder (F) to release it from the guide pins (G) and the compartment stud (highlighted with the green lines) (Figure 1-12). Then remove the battery holder.

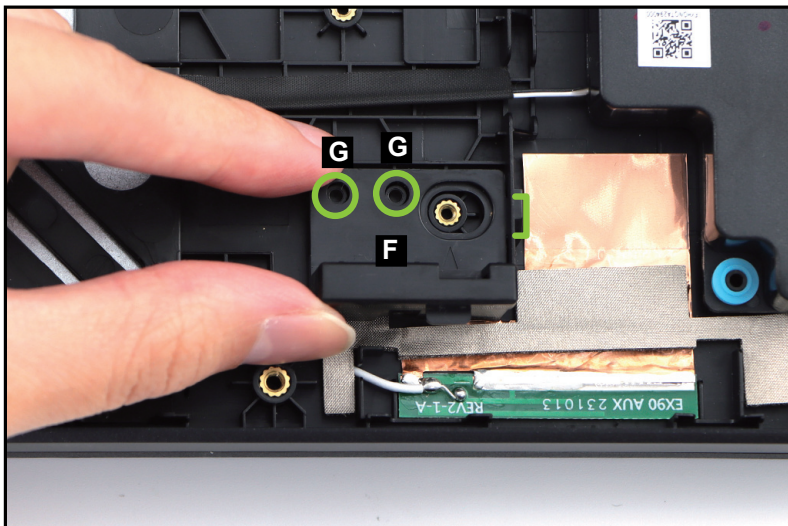


Figure 1-12. Battery Pack Removal

+ **IMPORTANT:**

Follow local regulations for battery disposal.

# Transfer Board Removal

---

## Prerequisite:

### Battery Pack Removal

1. Disconnect the keyboard FPC from the transfer board connector (A) (Figure 1-13).
2. Disconnect the transfer board FFC (B) from the mainboard and transfer board connectors (Figure 1-13).
3. Remove two (2) screw securing the transfer board (Figure 1-13).

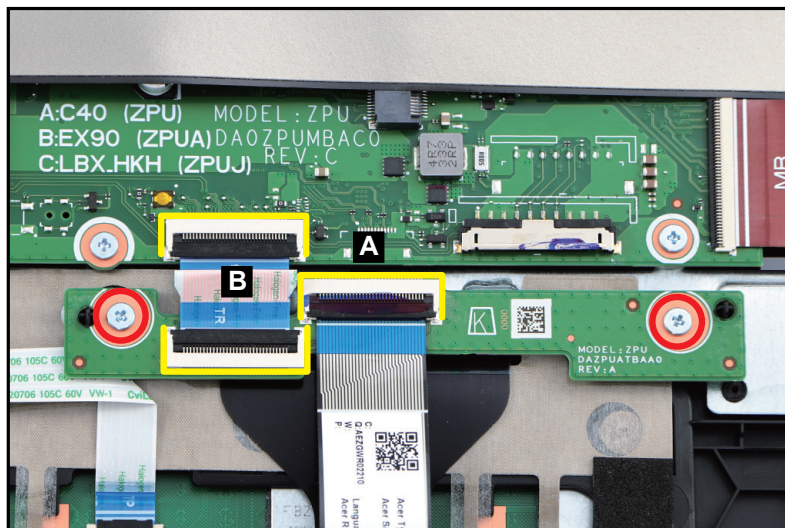


Figure 1-13. Transfer Board Removal

### ⚠ CAUTION:

Keyboard FPC (Flexible Printed Circuit) and transfer board FFC (Flexible Flat Circuit) can be damaged if removed while the mainboard and transfer board connectors are locked.

4. Release the transfer board (C) from the guide pins (D) on the top assembly (Figure 1-14). Then remove the transfer board.

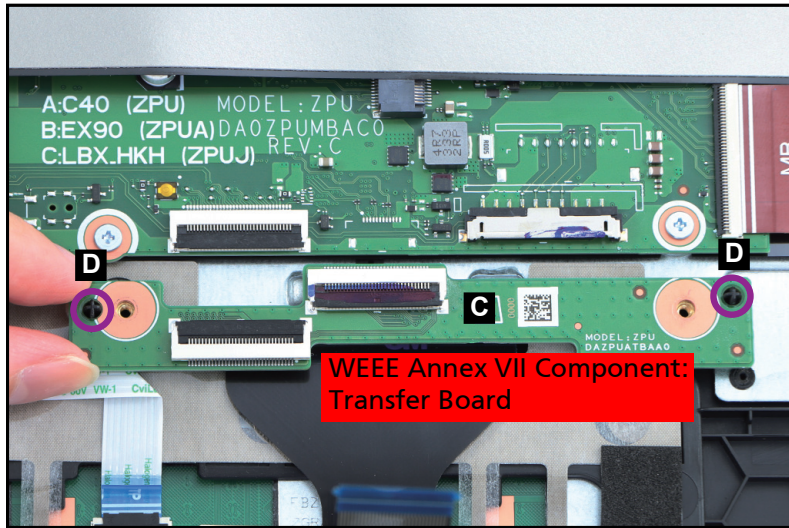


Figure 1-14. Transfer Board Removal

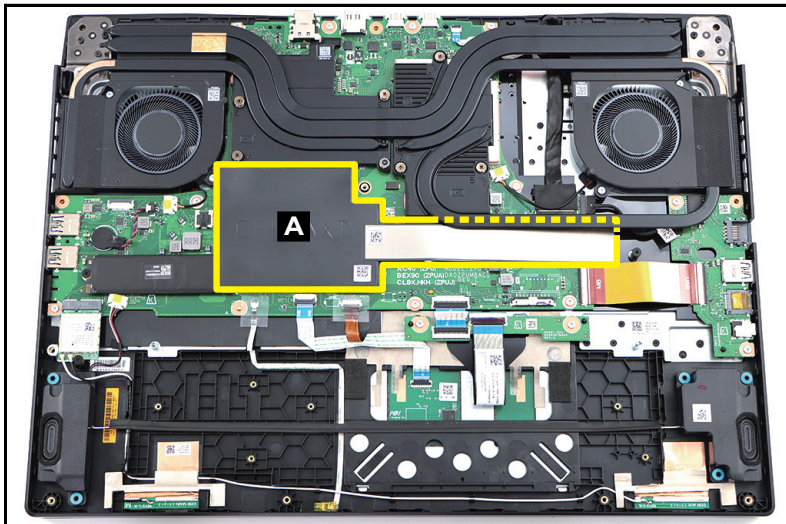
# SSD Modules Removal

---

## Prerequisite:

### Battery Pack Removal

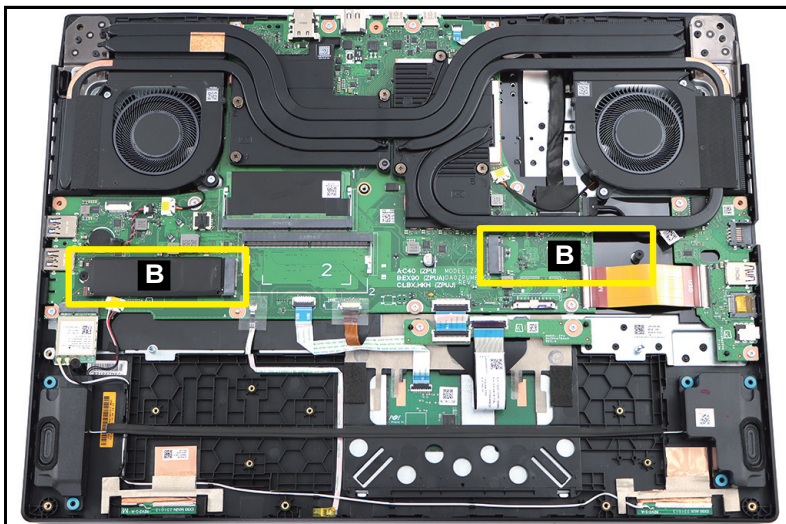
1. Detach the absorber with mylar (A) as shown in [Figure 1-15](#).



---

**Figure 1-15. SSD Module Removal**

2. Find the SSD modules (B) on the top assembly ([Figure 1-16](#)).



---

**Figure 1-16. SSD Modules Location**

3. Remove one (1) screw securing the SSD module (Figure 1-17).

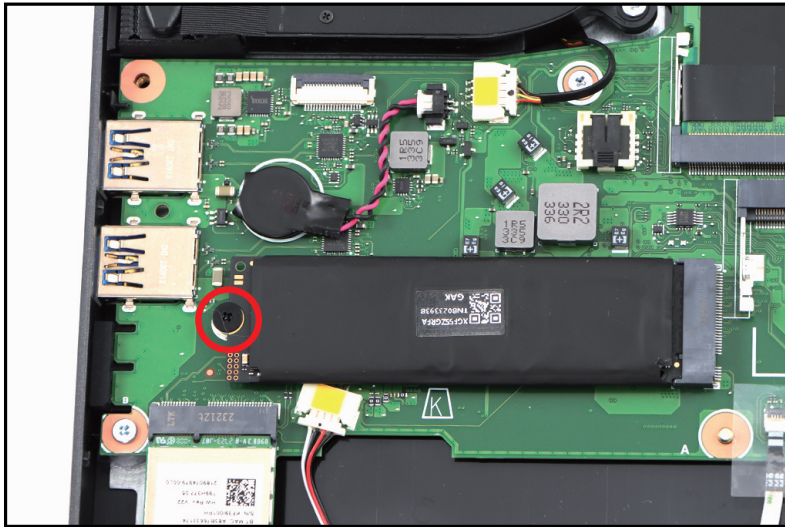


Figure 1-17. SSD Module Removal

4. Disconnect the SSD module from the mainboard connector (C) (Figure 1-18). Then remove the SSD module.



Figure 1-18. SSD Module Removal

5. Repeat steps 3~4 to remove another SSD module.

6. By holding the upper edge of the copper foil with mylar (D), unfold and detach it from the SSD module as shown in [Figure 1-19](#) and [Figure 1-20](#) but DO NOT remove yet!

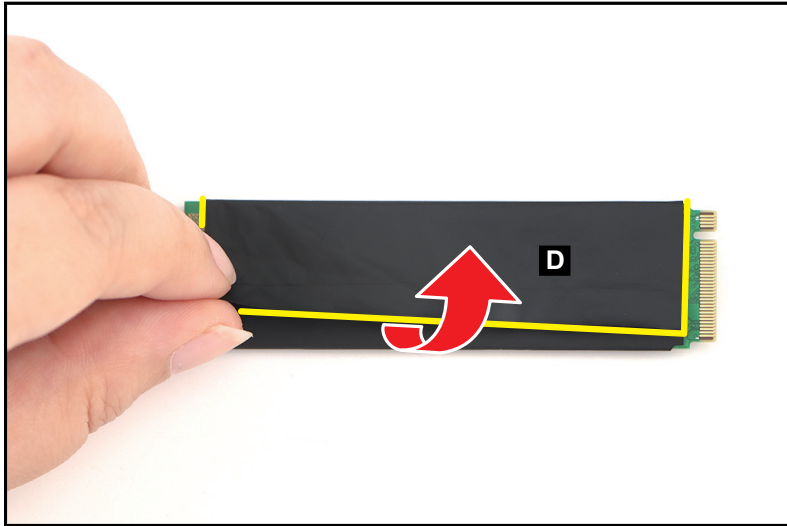


Figure 1-19. SSD Module Removal

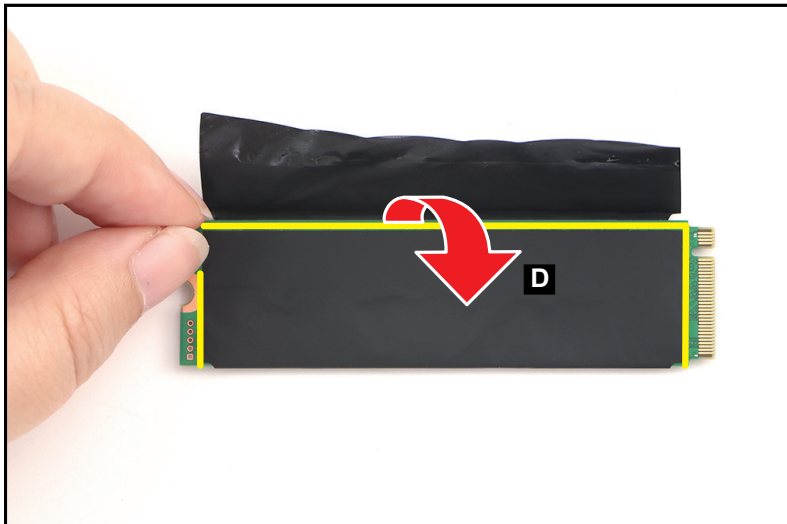


Figure 1-20. SSD Module Removal

7. Detach the SSD module from the adhesive graphite strip (marked with yellow dashed lines) as shown in [Figure 1-21](#).



**Figure 1-21. SSD Module Removal**

8. Repeat steps 6~7 to remove the copper foil with mylar from another SSD module.

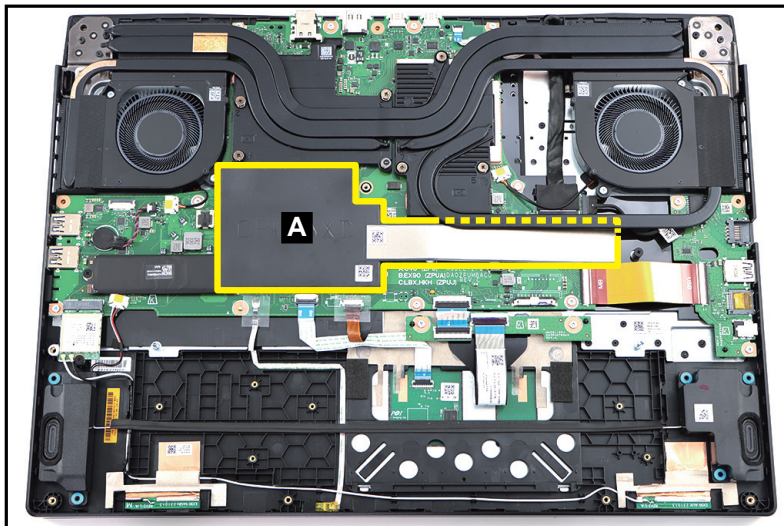
# DIMM Modules Removal

---

## Prerequisite:

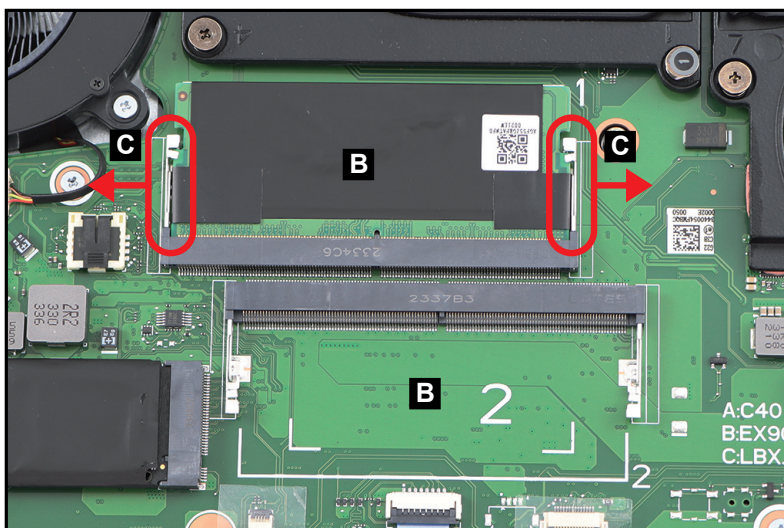
### Battery Pack Removal

1. Detach the absorber with mylar (A) as shown in [Figure 1-22](#).



**Figure 1-22. DIMM Module Removal**

2. Find the DIMM modules (B) in the system ([Figure 1-23](#)).
3. Push the DIMM module clips (C) outwards ([Figure 1-23](#)).



**Figure 1-23. DIMM Module Removal**

4. Disconnect the DIMM module from the mainboard connector (D) (Figure 1-24). Then remove the DIMM module.

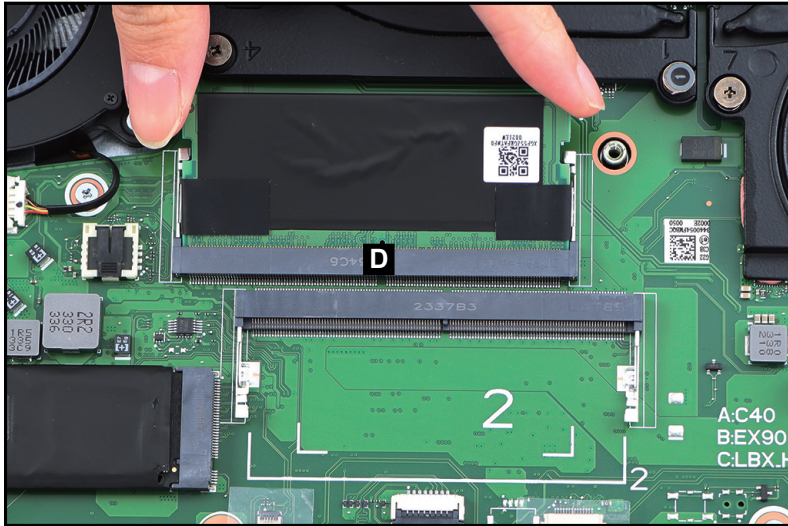


Figure 1-24. DIMM Module Removal

5. Repeat steps 3~4 to remove another DIMM module.
6. Detach the tabs (E) of the composite foil with thermal pad from the DIMM module as shown in Figure 1-25.

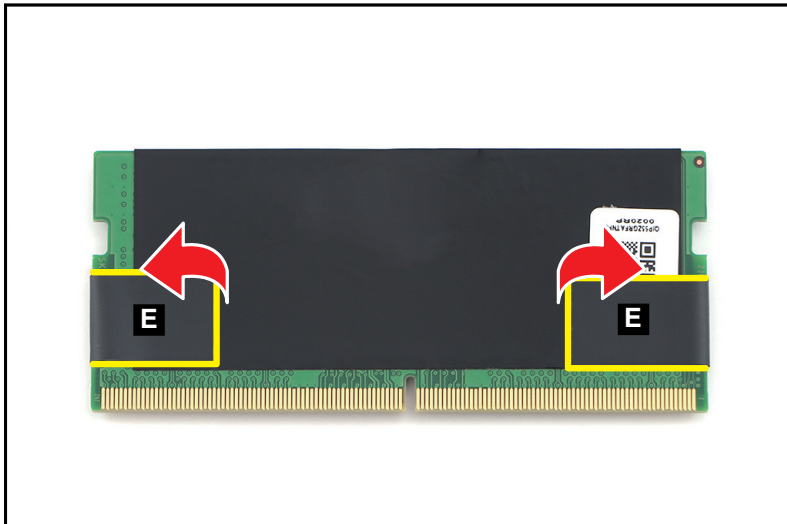
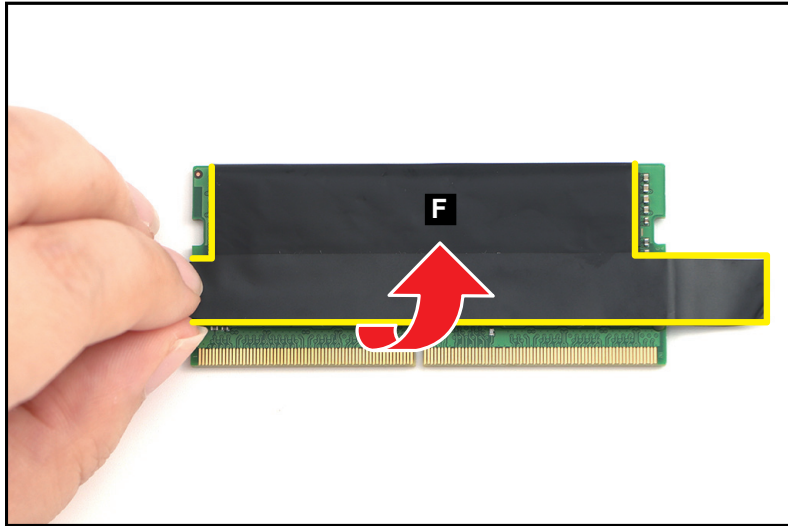


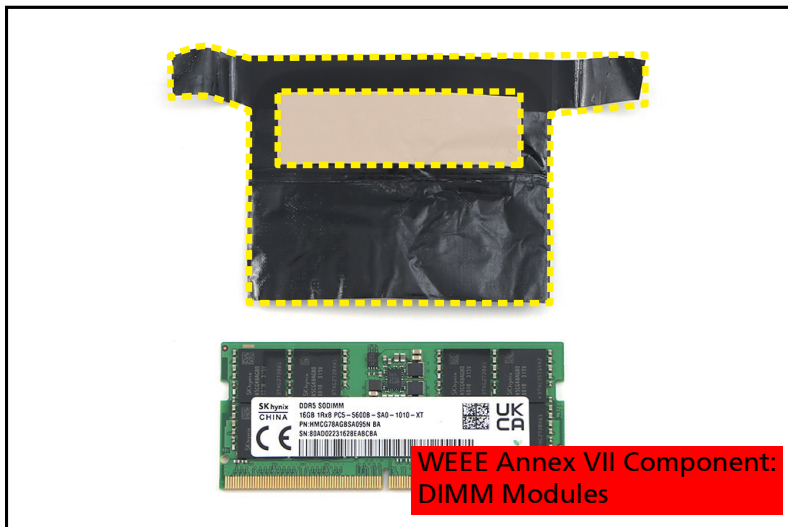
Figure 1-25. DIMM Module Removal

7. Peel off the composite foil with thermal pad (F) from the DIMM module (Figure 1-26).



**Figure 1-26. DIMM Module Removal**

8. Detach the DIMM module from the adhesive graphite strip (marked with yellow dashed line) as shown in Figure 1-27.



**Figure 1-27. DIMM Module Removal**

9. Repeat steps 6~8 to remove the composite foil with thermal pad from another DIMM module.



4. Disconnect the WLAN module from the mainboard connector (C) (Figure 1-30). Then remove the WLAN module.



Figure 1-30. WLAN Module Removal

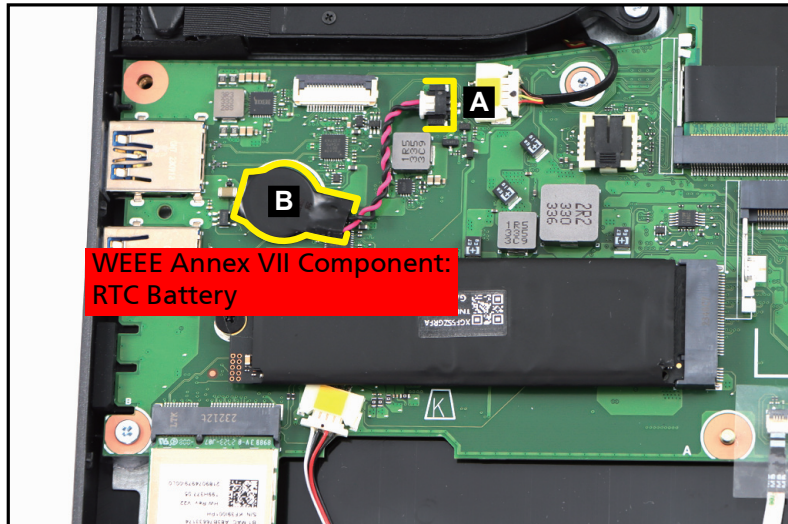
# RTC Battery Removal

---

## Prerequisite:

### Battery Pack Removal

1. Disconnect the RTC battery cable from the mainboard connector (A) (Figure 1-31).
2. Using plastic tweezers, carefully pry to detach the adhesive tape underneath the RTC battery (B) (Figure 1-31). Then remove the RTC battery.



---

Figure 1-31. RTC Battery Removal

- + **IMPORTANT:**  
Follow local regulations for battery disposal.

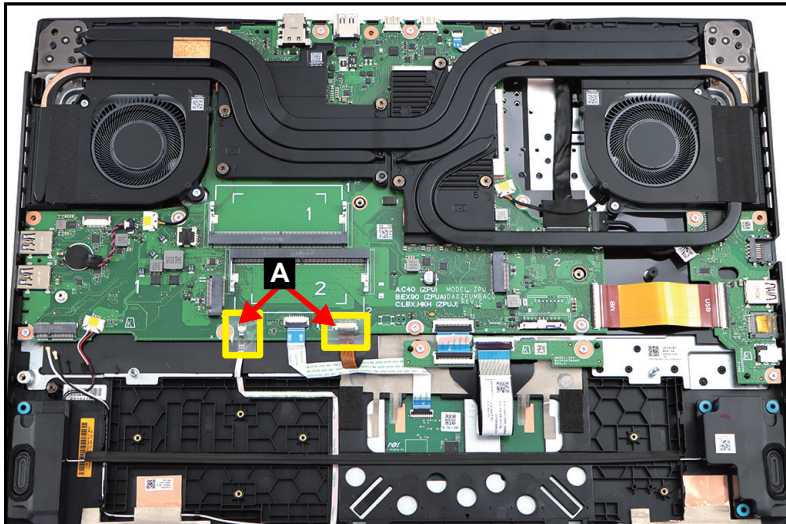
# Mainboard Removal

---

## Prerequisite:

[SSD Modules Removal](#), [DIMM Modules Removal](#), and [WLAN Module Removal](#)

1. Detach the mylars (A) securing the microphone FFC and keyboard backlight FPC connections ([Figure 1-32](#)).



---

**Figure 1-32. Mainboard Removal**

2. Disconnect the speaker cable from the mainboard connector (B) ([Figure 1-33](#)).
3. Disconnect the microphone FFC from the mainboard connector (C) ([Figure 1-33](#)).
4. Disconnect the touchpad FFC from the mainboard connector (D) ([Figure 1-33](#)).
5. Disconnect the keyboard backlight FPC from the mainboard connector (E) ([Figure 1-33](#)).
6. Disconnect the transfer board FFC from the mainboard connector (F) ([Figure 1-33](#)).
7. Disconnect the USB board FPC from the mainboard connector (G) ([Figure 1-33](#)).
8. Disconnect the USB power cable from the mainboard connector (H) ([Figure 1-33](#)).
9. Disconnect the eDP cable from the mainboard connector (I). Then detach the cable from the cable guides as shown in [Figure 1-33](#).

10. Disconnect the turbo key board FFC from the mainboard connector (J) (Figure 1-33).

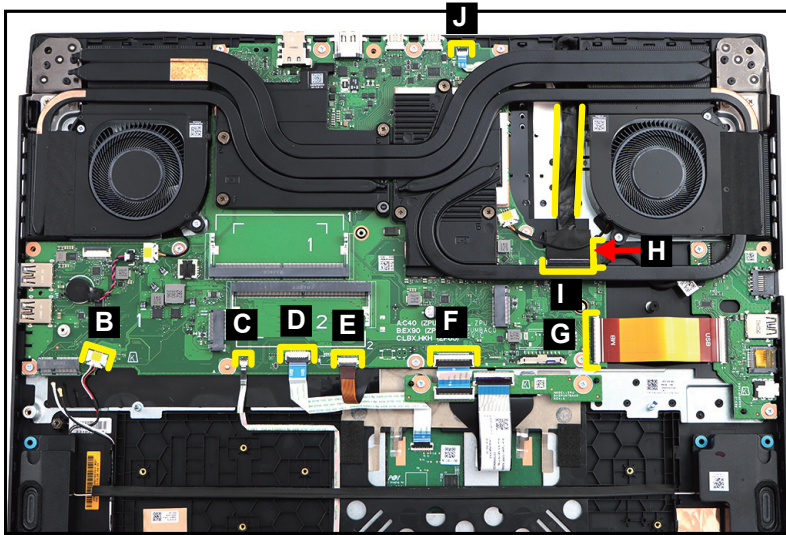


Figure 1-33. Mainboard Removal

**⚠ CAUTION:**

Microphone FFC (Flexible Flat Circuit), touchpad FFC, transfer board FFC, turbo key board FFC, keyboard backlight FPC (Flexible Printed Circuit), and USB board FPC, can be damaged if removed while the mainboard connectors are locked.

11. Remove thirteen (13) screws securing the mainboard, right fan, and left fan (Figure 1-34).

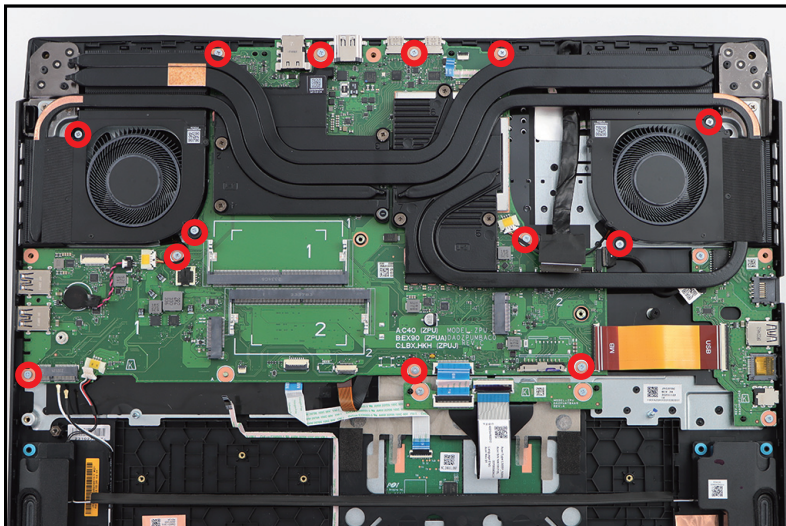


Figure 1-34. Mainboard Removal

12. Release the mainboard (K) with the heatsink and fans from the I/O ports slots and guide pins (L) on the top assembly (Figure 1-35). Then remove the mainboard.

+ **IMPORTANT:**

Make sure to remove the mainboard with the heatsink and fans vertically upwards.

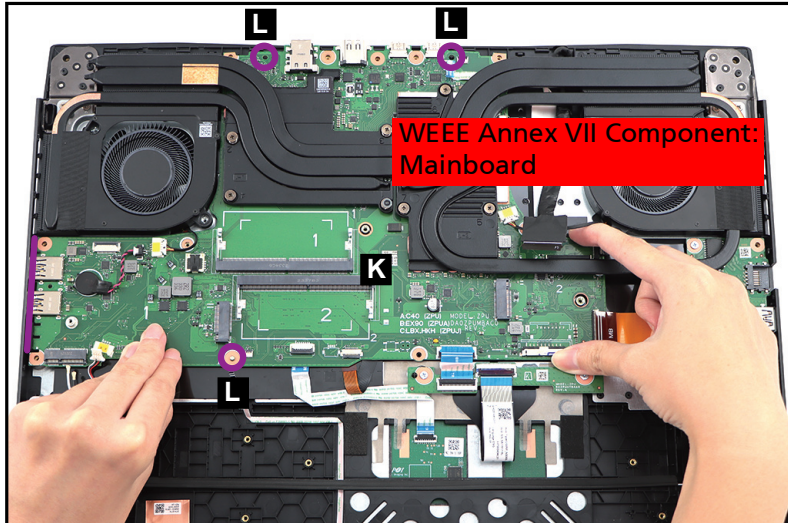


Figure 1-35. Mainboard Removal

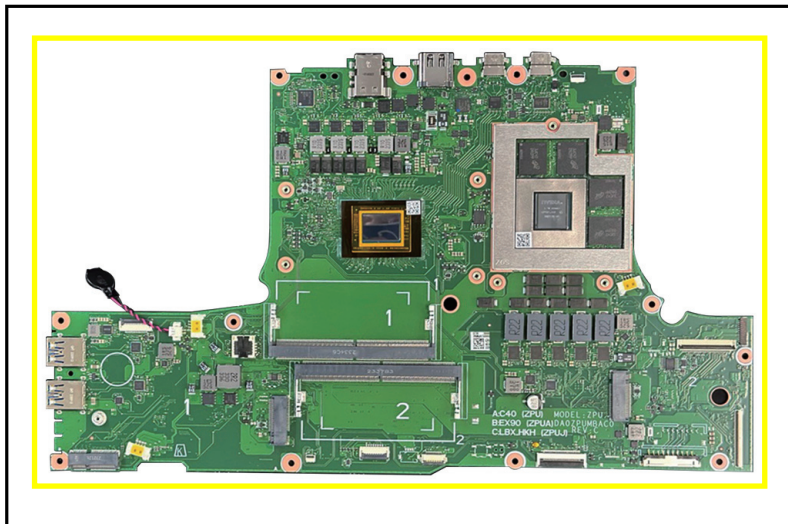


Figure 1-36. Mainboard

+ **IMPORTANT:**

Circuit boards >10 cm<sup>2</sup> have been highlighted with a yellow rectangle as shown in Figure 1-36. Remove the circuit board and follow local regulations for disposal.

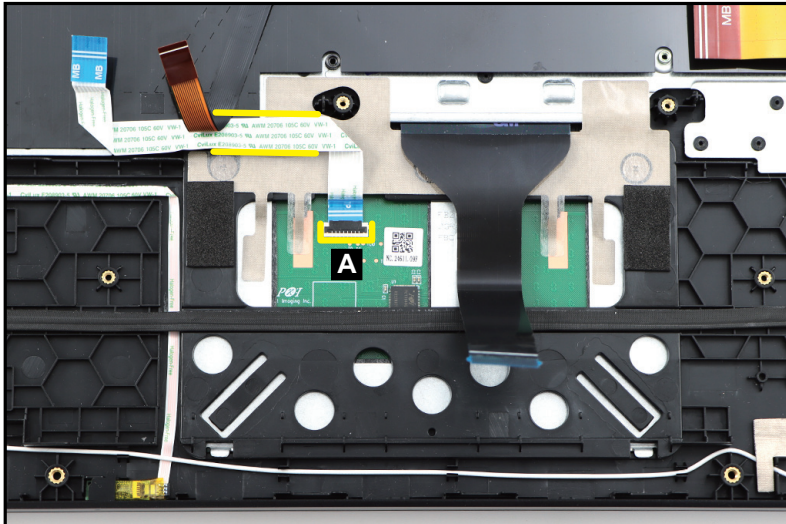
# Touchpad Module Removal

---

## Prerequisite:

[Transfer Board Removal](#) and [Mainboard Removal](#)

1. Disconnect the touchpad FFC from the touchpad module connector (A). Then carefully detach the FFC from its underneath adhesive (highlighted with the yellow lines) as shown in [Figure 1-37](#).



---

Figure 1-37. Touchpad Module Removal

### **⚠ CAUTION:**

Touchpad FFC (Flexible Flat Circuit) can be damaged if removed while the touchpad module connector is locked.

2. Lift and hold the keyboard FPC and keyboard backlight FPC. Then detach the conductive tape (B) from the touchpad module and top assembly (Figure 1-38).

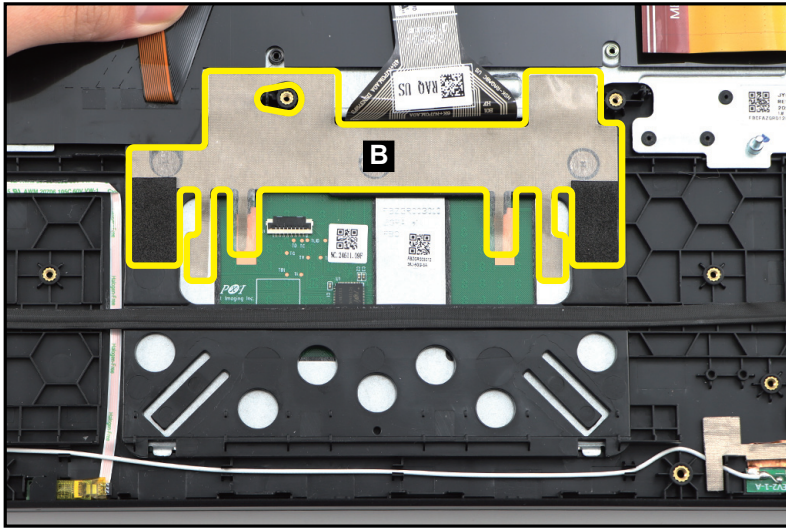


Figure 1-38. Touchpad Module Removal

3. Remove three (3) screws securing the touchpad module (Figure 1-39). Then release the keyboard FPC and keyboard backlight FPC.

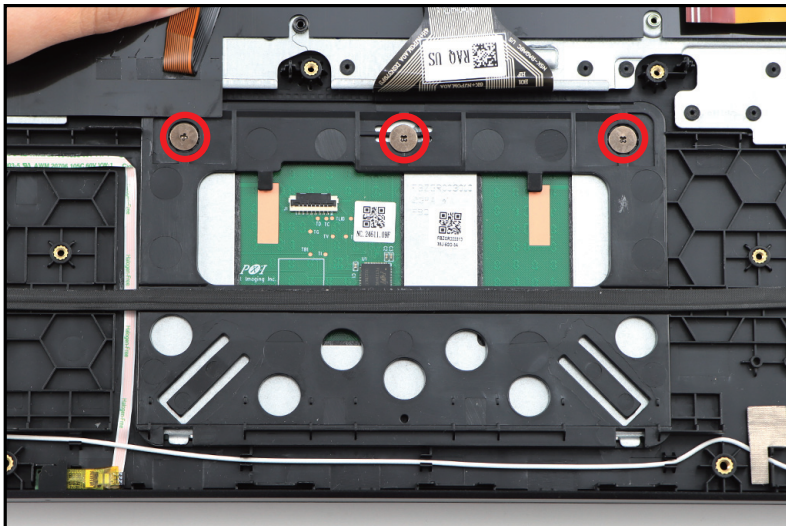


Figure 1-39. Touchpad Module Removal

4. Using the screwdriver, push the guide pins (C) firmly to release it from the top assembly (Figure 1-40).
5. Slide the touchpad module (D) slightly to disengage it from the bottom latches (E) (Figure 1-40). Then remove the touchpad module from the top assembly.

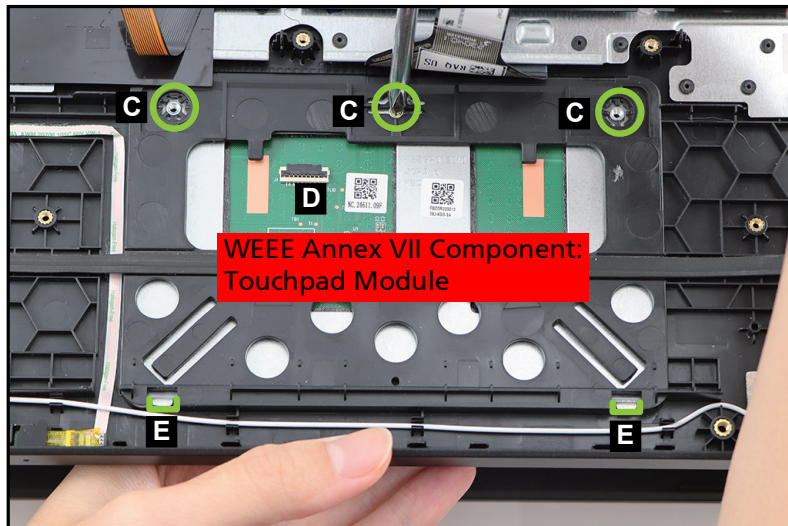


Figure 1-40. Touchpad Module Removal

# USB Board Removal

---

## Prerequisite:

### Mainboard Removal

1. Detach the tape (A) (Figure 1-41).
2. Disconnect the USB power cable from the USB board connector (B) (Figure 1-41). Then remove the USB power cable.
3. Disconnect the USB board FPC from the USB board connector (C) (Figure 1-41). Then remove the FPC.
4. Remove two (2) screws securing the USB board (Figure 1-41).

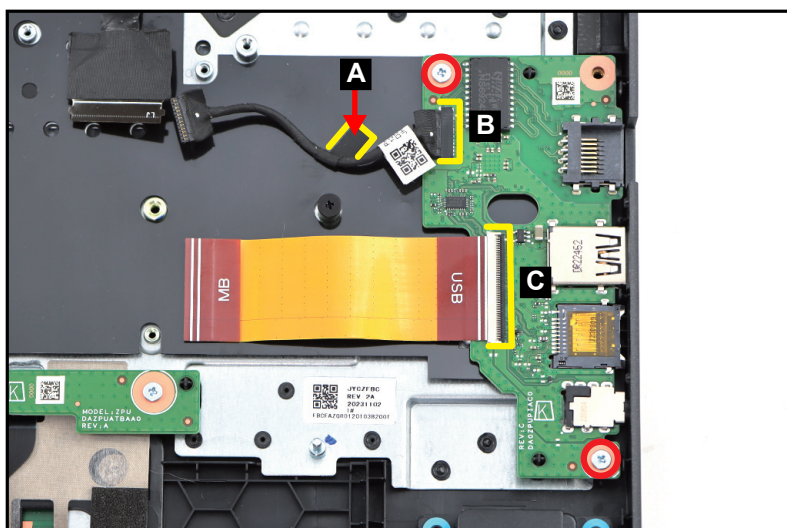


Figure 1-41. USB Board Removal

### **⚠ CAUTION:**

USB board FPC (Flexible Printed Circuit) can be damaged if removed while the USB board connector is locked.

5. Release the USB board (D) from the I/O port slots and guide pins (E) on the top assembly (Figure 1-42). Then remove the USB board.

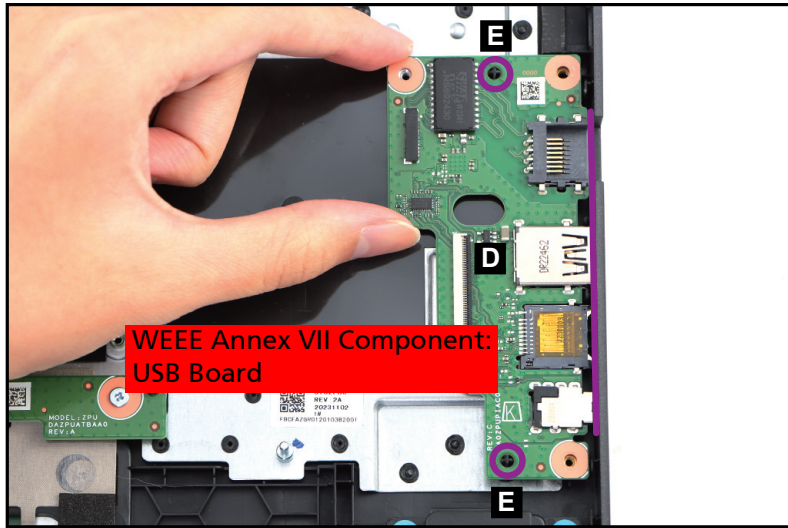


Figure 1-42. USB Board Removal

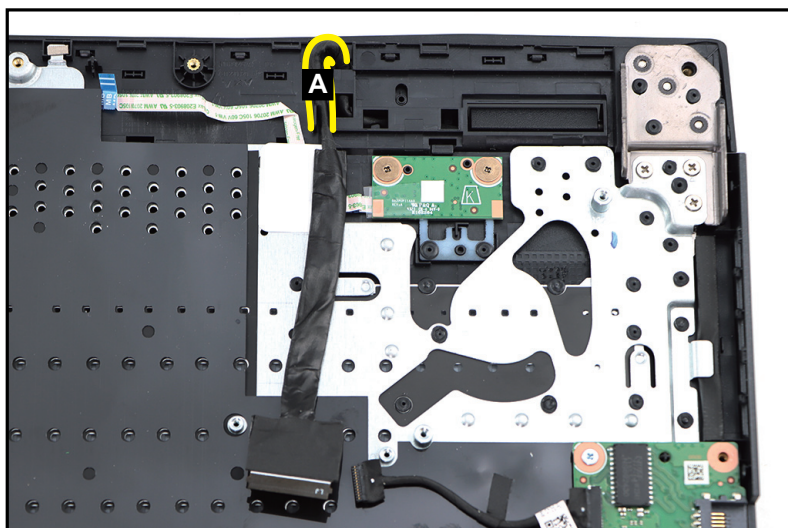
## LCD Module Removal

---

### Prerequisite:

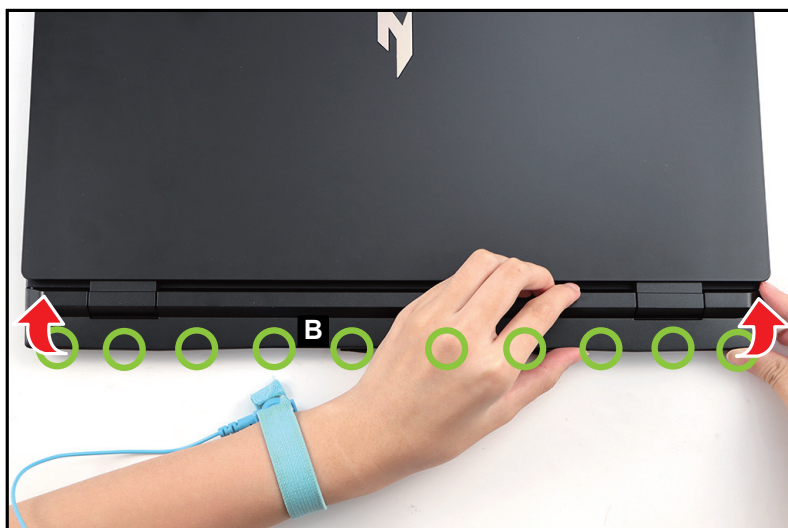
[Mainboard Removal](#)

1. Unroute the eDP cable (A) from the cable guides as shown in [Figure 1-43](#).



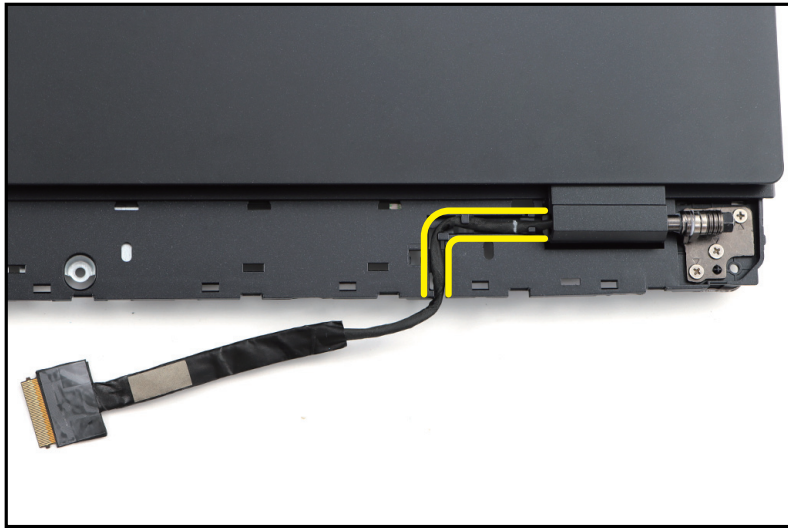
**Figure 1-43. LCD Module Removal**

2. Flip the top assembly. Then pry the rear top cap (B) to release its latches ([Figure 1-44](#)). Remove the rear top cap.



**Figure 1-44. LCD Module Removal**

3. Continue to unroute the eDP cable from the cable guides as shown in [Figure 1-45](#).



**Figure 1-45. LCD Module Removal**

4. Remove six (6) screws securing the LCD hinges ([Figure 1-46](#)).



**Figure 1-46. LCD Module Removal**

5. Lift the LCD module (C) to release it from the guide pins (D) (Figure 1-47). Then remove the LCD module away from the top assembly.

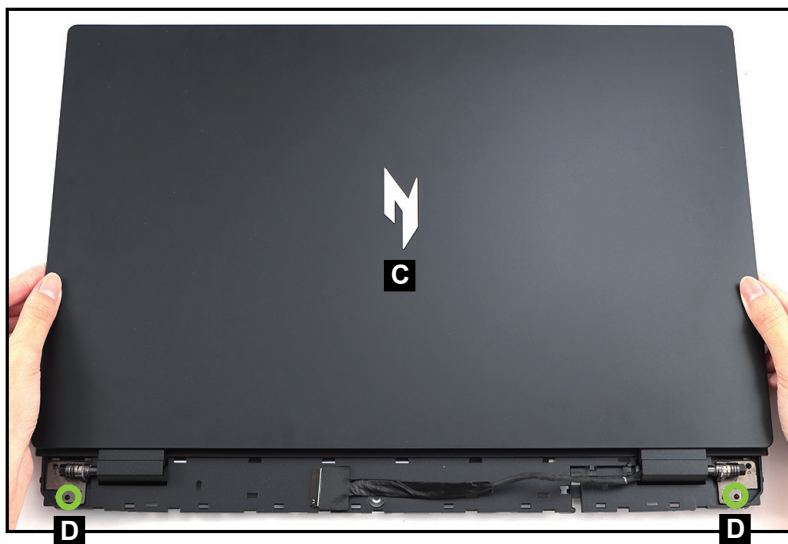


Figure 1-47. LCD Module Removal

## LCD Bezel Removal

---

### Prerequisite:

#### LCD Module Removal

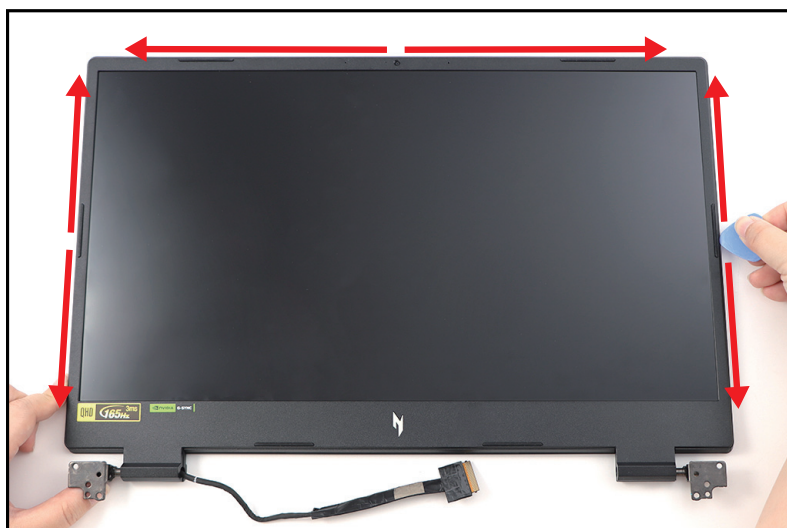
1. Pry the LCD bezel from the bottom side to release the latches (Figure 1-48).



---

Figure 1-48. LCD Bezel Removal

2. Continue prying along the left, right, and upper sides of the bezel as shown in Figure 1-49.



---

Figure 1-49. LCD Bezel Removal

3. Pry the four edges of the bezel until all the latches have been released (Figure 1-50). Then remove the LCD bezel.



**Figure 1-50. LCD Bezel Removal**

# LCD Panel Removal

---

## Prerequisite:

[LCD Bezel Removal](#)

### ⇒ NOTE:

The eDP cable includes the LCD panel cable and the camera cable.

1. Unroute and detach the eDP cable from the cable guides on the LCD cover as shown in [Figure 1-51](#).



---

**Figure 1-51. LCD Panel Removal**

2. Pry slightly to access the double-sided mounting tape (A) underneath the LCD panel (B). Then pull to detach the double-sided mounting tape. Repeat the same procedure to remove the double-sided mounting tape on another side of the LCD panel (Figure 1-52).

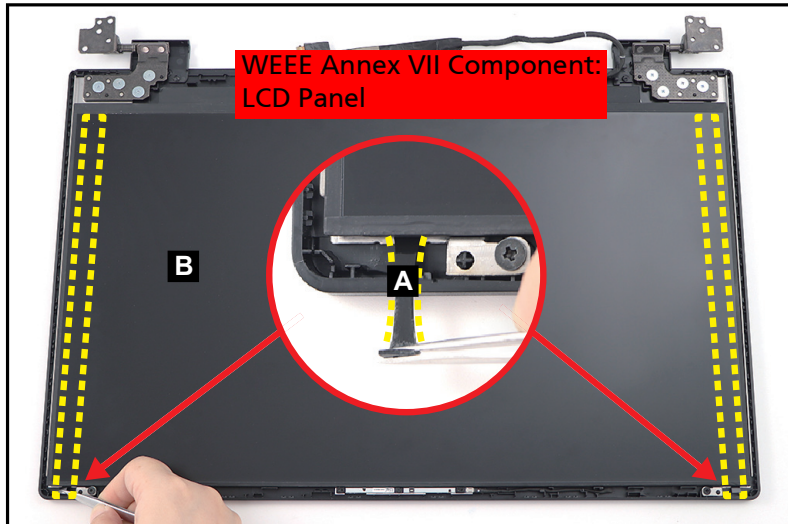


Figure 1-52. LCD Panel Removal

3. Carefully turn the LCD panel over so that the display panel is facing down on a flat surface. Then detach the mylar (C) securing the eDP cable to the LCD panel (Figure 1-53).

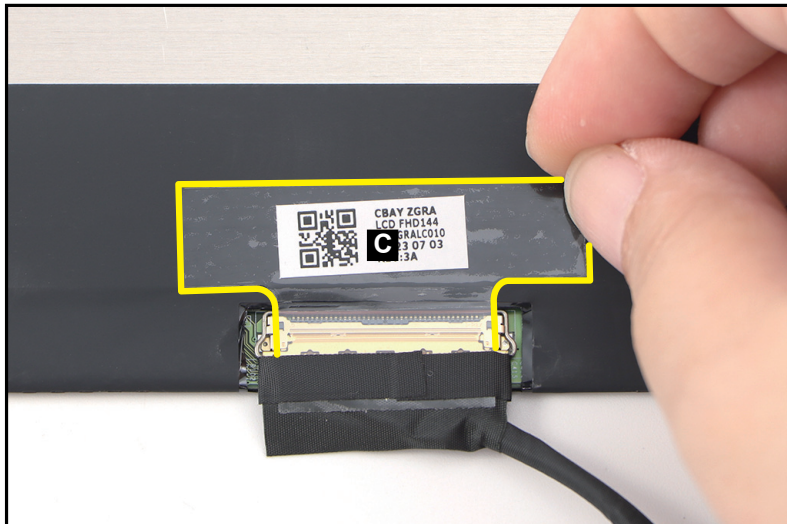


Figure 1-53. LCD Panel Removal

4. Lift the latch (D) securing the eDP cable (Figure 1-54).

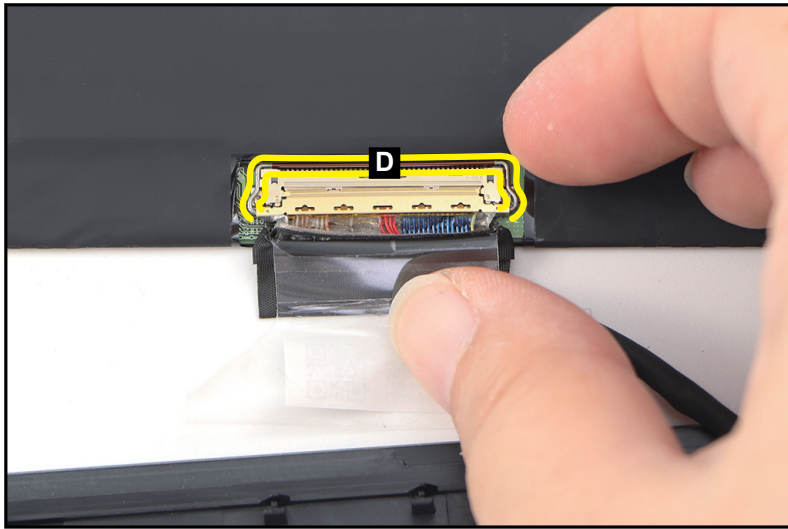


Figure 1-54. LCD Panel Removal

5. Disconnect the eDP cable from the LCD panel connector (E) (Figure 1-55). Then remove the LCD panel.

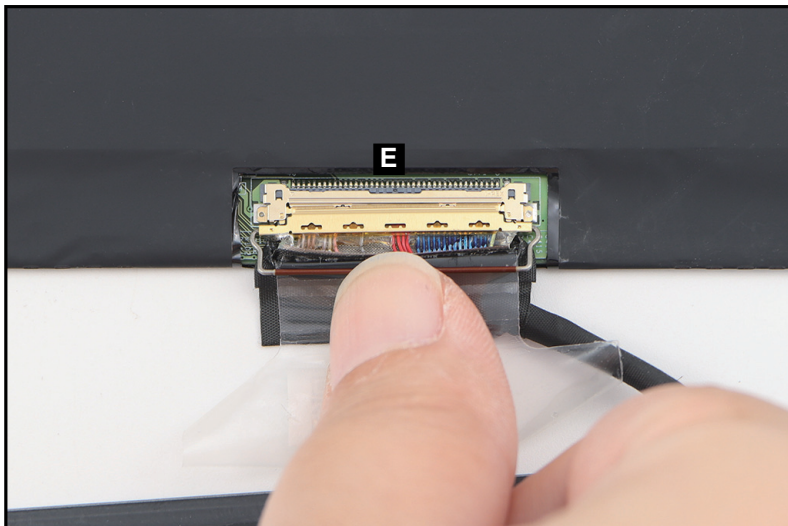


Figure 1-55. LCD Panel Removal

# Top Assembly Removal (Keyboard Removal)

---

## Prerequisite:

Ensure that the **Microphone Board, Speakers, Touchpad Module, USB Board, Turbo Key Board, and LCD Module** have been disassembled prior removing the top assembly.

## ⇒ NOTE:

The keyboard is included as part of the top assembly and can not be disassembled. In the event that the keyboard can no longer be used, replace the entire top assembly.



---

Figure 1-56. Top Assembly (Keyboard)

# Electronic Boards Diagrams

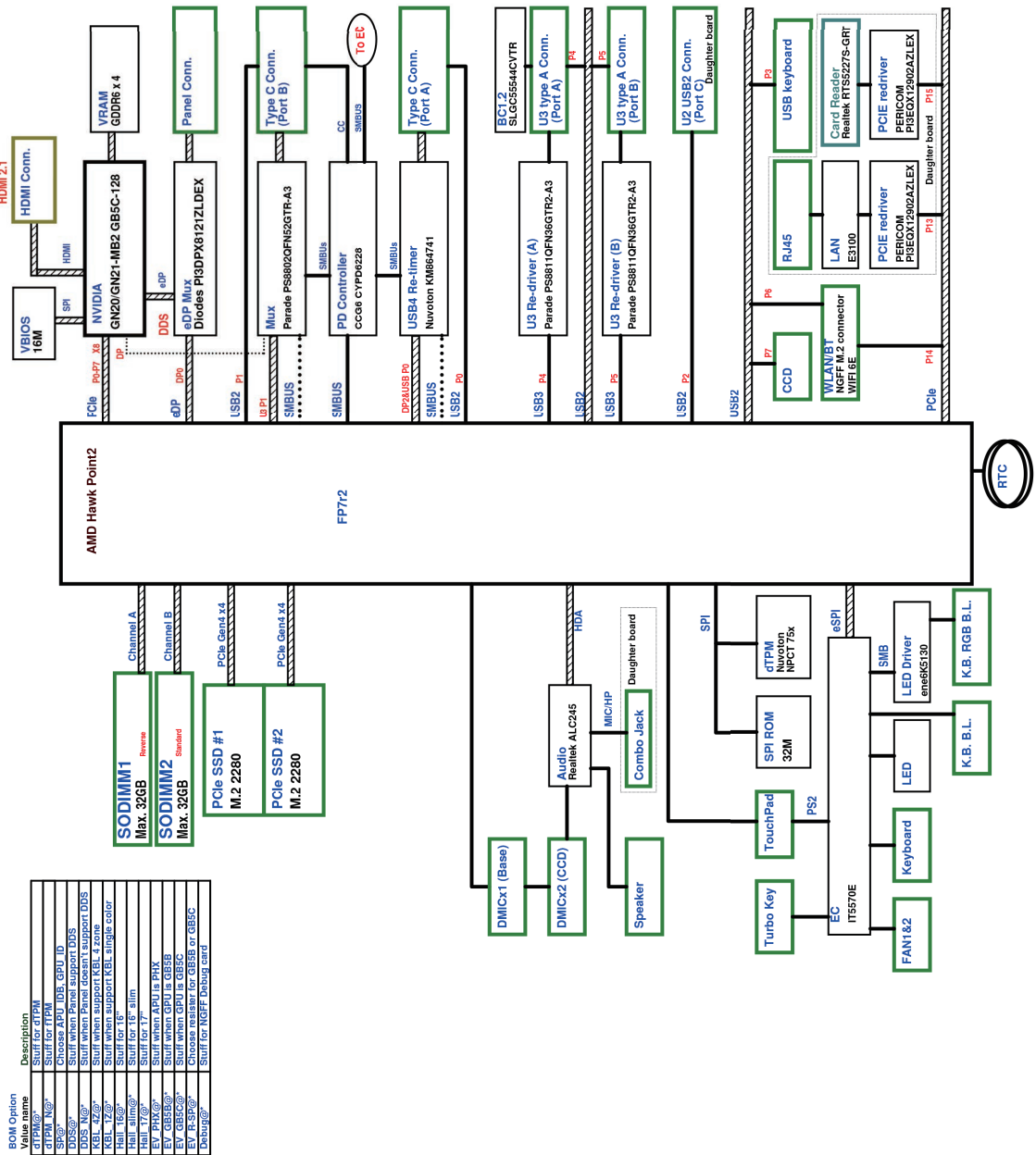


Figure 1-57. System Block Diagram

# Troubleshooting

---

This chapter shows you how to deal with common system problems. Read it before calling a technician if a problem occurs. Solutions to more serious problems require opening up the computer. Do not attempt to open the computer yourself; contact your dealer or authorized service center for assistance.

## Troubleshooting tips

---

This computer incorporates an advanced design that delivers on-screen error message reports to help you solve problems.

If the system reports an error message or an error symptom occurs, see "Error messages" below. If the problem cannot be resolved, contact your dealer.

## Error messages

---

If you receive an error message, note the message and take the corrective action. The following table lists the error messages in the alphabetical order together with the recommended course of action.

**Table 1-1. Error Messages**

Error Messages	Corrective Action
CMOS battery bad	Contact your dealer or an authorized service center.
CMOS checksum error	Contact your dealer or an authorized service center.
Disk boot failure	Insert a system (bootable) disk, then press <b>Enter</b> to reboot.
Equipment configuration error	Press <b>F2</b> (during POST) to enter BIOS utility, then press <b>Exit</b> in the BIOS utility to reboot.
Hard disk 0 error	Contact your dealer or an authorized service center.
Hard disk 0 extended type error	Contact your dealer or an authorized service center.
I/O parity error	Contact your dealer or an authorized service center.
Keyboard error or no keyboard connected	Contact your dealer or an authorized service center.
Keyboard interface error	Contact your dealer or an authorized service center.
Memory size mismatch	Press <b>F2</b> (during POST) to enter BIOS utility, then press <b>Exit</b> in the BIOS utility to reboot.

If you still encounter problems after going through the corrective measures, please contact your dealer or an authorized service center for assistance.

# FRU (Field Replaceable Unit) List

Please contact your local service center to find out how to obtain the part or replace your device.

## Exploded Diagrams

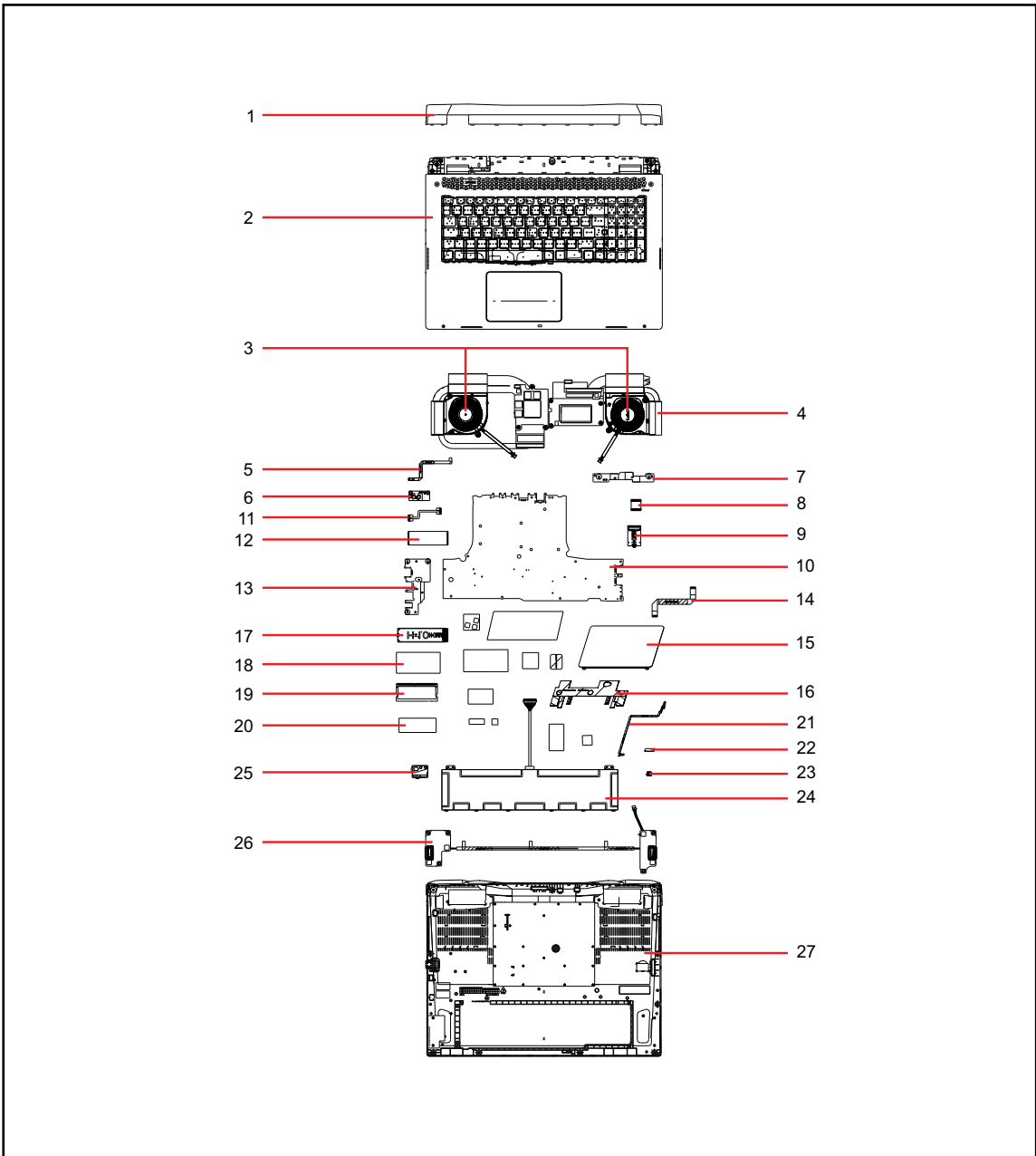


Figure 1-58. System Exploded Diagram

**Table 1-2. System Exploded Diagram**

No.	Description	Acer Part No.
1	CAP DECO	42.QK4N7.001
2	KEYBOARD ASSY COPILOT ANTENNA W/ UPPER CASE BL LG05P_N40B3L 103KS Arabic NK.I1513.33J/NK.I1517.1B8/NK.I1515.16D	6B.QP9N7.001
3	FAN L+R DTA	23.QJLN7.005
4	HEAT SINK	24.QP9N7.001
5	CABLE FFC SWITCH	50.QK4N7.001
6	BOARD SWITCH	55.QPKN7.002
7	BOARD TRANSFER	55.QP9N7.001
8	CABLE FFC BOARD KEYBOARD TRANSFER	50.QK4N7.003
9	Wireless LAN AMD Wi-Fi 6E BT5.3 MT7922_RZ616: E AMD 2x2 M.2 2230 PCIe BLE	KE.WF60A.002
10	Mainboard AN17-42 AMD GN21-X4 8GB R78845HS/GN21-X4/Vram8G	NB.QPA11.005
11	CABLE BOARD IO	50.QJQN7.006
12	CABLE FPC BOARD IO	50.QK4N7.002
13	BOARD IO	55.QPKN7.001
14	CABLE FFC TOUCHPAD	50.QK4N7.004
15	TOUCHPAD MODULE NC.24611.09K	56.QP7N7.001
16	CONDUCTIVE TAPE	47.QK4N7.003
17	Flash Disk HYNIX SSD NAND 1024GB M.2 2280 PC801 1024G HFS001TEJ9X125N LF+HF	KN.01K0G.003
18	FOIL COMPOSITE W/ PAD	47.QMBN7.001
19	Memory HYNIX SO-DIMM DDRV 5600 8GB HMC66AGBSA LF+HF 1anm, A-die 1Rx16	KN.8GB0G.082
20	FOIL CU W/ MYLAR, GRAPHITE SHEET	47.QJQN7.005
21	CABLE MIC	50.QP7N7.001
22	MICROPHONE	23.QP7N7.001
23	RUBB SI TOP MIC	47.QP7N7.003
24	Battery SIMPLO Typ.90Wh 5840mAh 4S1P AP21A7T 287.5x66x10.06(mm) AP21A 15.4V Li-Ion	KT.00407.011
25	HOLDER BATTERY 90W	42.QJLN7.003
26	SPEAKER R+L	23.QK4N7.001
27	LOWER CASE	64.QP9N7.001

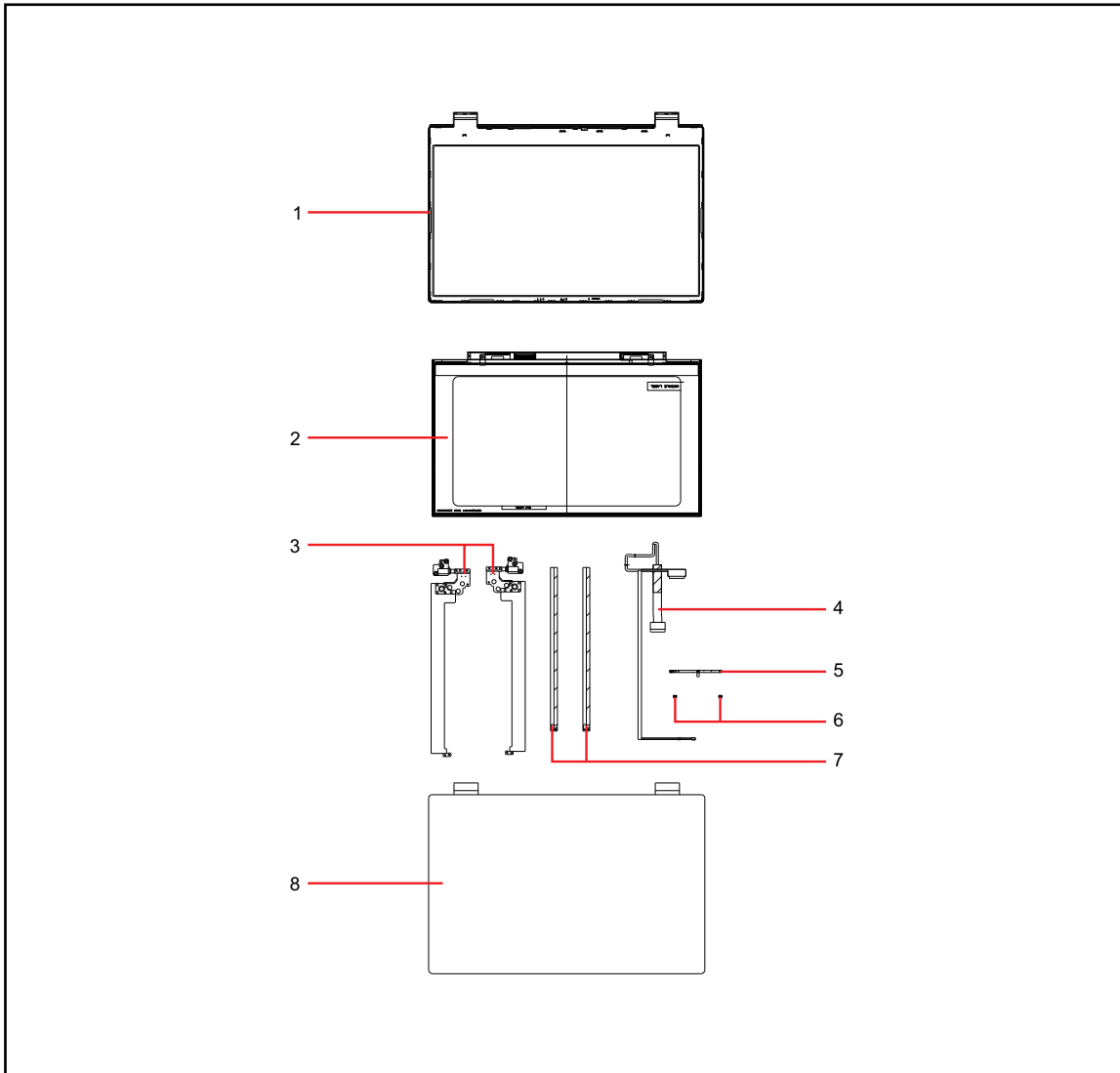


Figure 1-59. LCD Assembly Exploded Diagram

Table 1-3. LCD Assembly Exploded Diagram

No.	Description	Acer Part No.
1	LCD BEZEL	62.QK4N7.001
2	LED LCD Panel BOE 17.3" QHD IPS None Glare NE173QHM-NY6 V8.2 300nit DCI-P3 100% 165Hz 9ms 1000:1 (Narrow border,OD GTG 3ms, 3.5t DDS)	KL.1730E.017
3	HINGE L	33.QK4N7.001
	HINGE R	33.QK4N7.002
4	CABLE LCD FHD 144 Hz/QHD 165 Hz	50.QK4N7.007
5	Camera Tech-Front HD Camera YHVJ-1 OV9734 SPCA2112N DS31036E(BG) ZTS6735 TNR	KS.0HD0Q.016

**Table 1-3. LCD Assembly Exploded Diagram (Continued)**








<b>No.</b>	<b>Description</b>	<b>Acer Part No.</b>
6	RUBBER MICROPHONE	47.QK4N7.004
7	LCD ADHESIVE TAPE T=0.5MM FHD 144 Hz/QHD 165 Hz LCD	47.QK4N7.001
8	LCD COVER QHD 165 Hz	61.QP7N7.001

# FRU List

Table 1-4. FRU List

Category	Description	Acer Part No.
<b>ADAPTER</b>		
	Adapter Chicony Power 230W 19.5V 1.7x5.5x11 A230A033P LF Black Meet CoC Tler2 / IEC 62368	KP.2300H.004
	Adapter DELTA ADP-230JB DA 230W High power 5.5PHY (1.7x5.5x11) Brick 19.5V/11.8A Black	KP.23001.002
	Adapter LITE-ON PA-1231-16A5 230W High power 5.5PHY (1.7x5.5x11) Brick 19.5V/11.8A Black	KP.23003.001
<b>BATTERY</b>		
	Battery SIMPLO Typ.90Wh 5840mAh 4S1P AP21A7T 287.5x66x10.06(mm) AP21A 15.4V Li-Ion	KT.00407.011
	Battery LGES Typ.90Wh 5880mAh 4S1P AP21A8T 287.5x66x10.06(mm) AP21A 15.4V Li-Ion	KT.0040G.014
	Battery PANASONIC Typ.90Wh 5850mAh 4S1P AP21A5T 287.5x66x10.06(mm) AP21A 15.4V Li-Ion	KT.00405.012
<b>BOARD</b>		
	BOARD SWITCH	55.QPKN7.002
	BOARD IO	55.QPKN7.001
	BOARD TRANSFER	55.QP9N7.001
<b>CABLE</b>		
	CABLE FFC SWITCH	50.QK4N7.001


**Table 1-4. FRU List (Continued)**

Category	Description	Acer Part No.
	CABLE FPC BOARD IO	50.QK4N7.002
	CABLE BOARD IO	50.QJQN7.006
	CABLE FFC BOARD KEYBOARD TRANSFER	50.QK4N7.003
	CABLE FFC TOUCHPAD	50.QK4N7.004
	CABLE MIC	50.QP7N7.001
	CABLE LCD FHD 144 Hz/QHD 165 Hz	50.QK4N7.007
	CABLE LCD FHD 165Hz	50.QK4N7.006
<b>CAMERA</b>		
	Camera Tech-Front HD Camera YHVJ-1 OV9734 SPCA2112N DS31036E(BG) ZTS6735 TNR	KS.0HD0Q.016
	Camera CHICONY HD Camera CNFLH33 GC1009 RTS5855 PS-31382C1FI (BG) ZTS6735 TNR	KS.0HD06.030
	Camera CHICONY FHD FF CKFMF12 GC2607 RTS5856W 1L4C089A3 (BG) ZTS6735 TNR (3.2mm)	KS.FHD06.009
	Camera Tech-Front FHD FF YHVH OV02C10 SPCA 2093N3 1L4C089A1 (BG) ZTS6735 TNR ( 3.2mm)	KS.FHD0Q.006

**Table 1-4. FRU List (Continued)**

Category	Description	Acer Part No.
<b>FAN</b>		
	FAN L+R DTA	23.QJLN7.005
	FAN L+R SUNON	23.QJLN7.006
	FAN L+R FCN'	23.QJLN7.007
<b>HDD</b>		
	Flash Disk HYNIX SSD NAND 1024GB M.2 2280 PC801 1024G HFS001TEJ9X125N LF+HF	KN.01K0G.003
	Flash Disk SAMSUNG SSD NAND 1024GB SED PM9A1a MZVL21T0HDLU-00BT7 LF+HF	KN.01K0B.009
	Flash Disk SAMSUNG SSD NAND 512GB SED PM9A1a MZVL2512HDJD-00BT7 LF+HF	KN.5120B.044
<b>KB ASSEMBLY</b>		
	KEYBOARD ASSY COPILOT ANTENNA W/ UPPER CASE BL LG05P_N40B3L 103KS Arabic NK.I1513.33J/NK.I1517.1B8/NK.I151S.16D	6B.QP9N7.001
	KEYBOARD ASSY COPILOT ANTENNA W/ UPPER CASE BL LG05P_N40B3L 104KS FR/Arabic NK.I1513.341/NK.I1517.1BR/NK.I151S.16W	6B.QP9N7.002
	KEYBOARD ASSY COPILOT ANTENNA W/ UPPER CASE BL LG05P_N40B3L 104KS Belgium NK.I1513.33X/NK.I1517.1BM/NK.I151S.16S	6B.QP9N7.003
	KEYBOARD ASSY COPILOT ANTENNA W/ UPPER CASE BL LG05P_N40B3L 104KS Brazilian Portuguese NK.I1513.33Y/NK.I1517.1BN/NK.I151S.16T	6B.QP9N7.004
	KEYBOARD ASSY COPILOT ANTENNA W/ UPPER CASE BL LG05P_N40B3L 103KS US International w/ Bulgaria NK.I1513.33V/NK.I1517.1BK/NK.I151S.16Q	6B.QP9N7.005
	KEYBOARD ASSY COPILOT ANTENNA W/ UPPER CASE BL LG05P_N40B3L 103KS US International w/ Canadian French NK.I1513.33U/NK.I1517.1BJ/NK.I151S.16P	6B.QP9N7.006
	KEYBOARD ASSY COPILOT ANTENNA W/ UPPER CASE BL LG05P_N40B3L 104KS SLO/CRO NK.I1513.349/NK.I1517.1BZ/NK.I151S.174	6B.QP9N7.007

**Table 1-4. FRU List (Continued)**

Category	Description	Acer Part No.
	KEYBOARD ASSY COPILOT ANTENNA W/ UPPER CASE BL LG05P_N40B3L 104KS CZ/SK NK.I1513.33Z/NK.I1517.1BP/NK.I151S.16U	6B.QP9N7.008
	KEYBOARD ASSY COPILOT ANTENNA W/ UPPER CASE BL LG05P_N40B3L 104KS Danish NK.I1513.340/NK.I1517.1BQ/NK.I151S.16V	6B.QP9N7.009
	KEYBOARD ASSY COPILOT ANTENNA W/ UPPER CASE BL LG05P_N40B3L 104KS French NK.I1513.342/NK.I1517.1BS/NK.I151S.16X	6B.QP9N7.010
	KEYBOARD ASSY COPILOT ANTENNA W/ UPPER CASE BL LG05P_N40B3L 104KS German NK.I1513.343/NK.I1517.1BT/NK.I151S.16Y	6B.QP9N7.011
	KEYBOARD ASSY COPILOT ANTENNA W/ UPPER CASE BL LG05P_N40B3L 103KS Greek NK.I1513.33L/NK.I1517.1BA/NK.I151S.16F	6B.QP9N7.012
	KEYBOARD ASSY COPILOT ANTENNA W/ UPPER CASE BL LG05P_N40B3L 103KS US International w/ Hebrew NK.I1513.33T/NK.I1517.1BH/NK.I151S.16N	6B.QP9N7.013
	KEYBOARD ASSY COPILOT ANTENNA W/ UPPER CASE BL LG05P_N40B3L 104KS Hungarian NK.I1513.344/NK.I1517.1BU/NK.I151S.16Z	6B.QP9N7.014
	KEYBOARD ASSY COPILOT ANTENNA W/ UPPER CASE BL LG05P_N40B3L 103KS Persian NK.I1513.33Q/NK.I1517.1BE/NK.I151S.16K	6B.QP9N7.015
	KEYBOARD ASSY COPILOT ANTENNA W/ UPPER CASE BL LG05P_N40B3L 104KS Italian NK.I1513.345/NK.I1517.1BV/NK.I151S.170	6B.QP9N7.016
	KEYBOARD ASSY COPILOT ANTENNA W/ UPPER CASE BL LG05P_N40B3L 107KS Japanese NK.I1513.34F/NK.I151S.17A	6B.QP9N7.017
	KEYBOARD ASSY COPILOT ANTENNA W/ UPPER CASE BL LG05P_N40B3L 103KS Korean NK.I1513.33M/NK.I1517.1BB/NK.I151S.16G	6B.QP9N7.018
	KEYBOARD ASSY COPILOT ANTENNA W/ UPPER CASE BL LG05P_N40B3L 104KS ALA-Spanish NK.I1513.33W/NK.I1517.1BL/NK.I151S.16R	6B.QP9N7.019
	KEYBOARD ASSY COPILOT ANTENNA W/ UPPER CASE BL LG05P_N40B3L 104KS Norwegian NK.I1513.347/NK.I1517.1BX/NK.I151S.172	6B.QP9N7.020

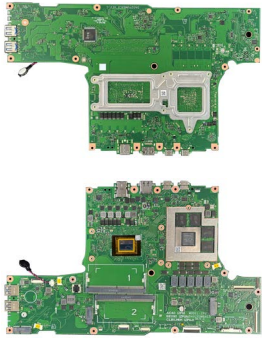





**Table 1-4. FRU List (Continued)**

Category	Description	Acer Part No.
	KEYBOARD ASSY COPILOT ANTENNA W/ UPPER CASE BL LG05P_N40B3L 104KS Portuguese NK.I1513.348/NK.I1517.1BY/NK.I151S.173	6B.QP9N7.021
	KEYBOARD ASSY COPILOT ANTENNA W/ UPPER CASE BL LG05P_N40B3L 103KS Russian NK.I1513.33N/NK.I1517.1BC/NK.I151S.16H	6B.QP9N7.022
	KEYBOARD ASSY COPILOT ANTENNA W/ UPPER CASE BL LG05P_N40B3L 104KS Nordic NK.I1513.346/NK.I1517.1BW/NK.I151S.171	6B.QP9N7.023
	KEYBOARD ASSY COPILOT ANTENNA W/ UPPER CASE BL LG05P_N40B3L 104KS Spanish NK.I1513.34A/NK.I1517.1C0/NK.I151S.175	6B.QP9N7.024
	KEYBOARD ASSY COPILOT ANTENNA W/ UPPER CASE BL LG05P_N40B3L 104KS Sweden NK.I1513.34B/NK.I1517.1C1/NK.I151S.176	6B.QP9N7.025
	KEYBOARD ASSY COPILOT ANTENNA W/ UPPER CASE BL LG05P_N40B3L 104KS Swiss/G NK.I1513.34C/NK.I1517.1C2/NK.I151S.177	6B.QP9N7.026
	KEYBOARD ASSY COPILOT ANTENNA W/ UPPER CASE BL LG05P_N40B3L 103KS Thailand NK.I1513.33R/NK.I1517.1BF/NK.I151S.16L	6B.QP9N7.027
	KEYBOARD ASSY COPILOT ANTENNA W/ UPPER CASE BL LG05P_N40B3L 104KS Turkish NK.I1513.34D/NK.I1517.1C3/NK.I151S.178	6B.QP9N7.028
	KEYBOARD ASSY COPILOT ANTENNA W/ UPPER CASE BL LG05P_N40B3L 103KS Traditional Chinese NK.I1513.33K/NK.I1517.1B9/NK.I151S.16E	6B.QP9N7.029
	KEYBOARD ASSY COPILOT ANTENNA W/ UPPER CASE BL LG05P_N40B3L 103KS US International NK.I1513.33S/NK.I1517.1BG/NK.I151S.16M	6B.QP9N7.030
	KEYBOARD ASSY COPILOT ANTENNA W/ UPPER CASE BL LG05P_N40B3L 104KS UK NK.I1513.34E/NK.I1517.1C4/NK.I151S.179	6B.QP9N7.031
	KEYBOARD ASSY COPILOT ANTENNA W/ UPPER CASE BL LG05P_N40B3L 103KS Ukrainian NK.I1513.33P/NK.I1517.1BD/NK.I151S.16J	6B.QP9N7.032

**Table 1-4. FRU List (Continued)**

Category	Description	Acer Part No.
<b>LCD</b>		
	LED LCD Panel BOE 17.3" QHD IPS None Glare NE173QHM-NY6 V8.2 300nit DCI-P3 100% 165Hz 9ms 1000:1 (Narrow border,OD GTG 3ms, 3.5t DDS)	KL.1730E.017
	LED LCD Panel CSOT 17.3" QHD IPS None Glare MNH301CA3-3 300nit DCI-P3 100% 165Hz 9ms 1000:1 (Narrow border,OD GTG 3ms, 3.5t DDS)	KL.1730C.001
	LED LCD Panel CMI 17.3" FHD IPS None Glare N173HME-GA1 C1 300nit sRGB 100% 165Hz 9ms 1000:1 (Narrow border,OD GTG3ms, 3.0t, DDS)	KL.1730D.011
	LED LCD Panel AUO 17.3" FHD IPS None Glare B173HAN05.5 H/W 2A 300nit sRGB 100% 165Hz 9ms 1000:1 (Narrow border,OD GTG3ms, 3.0t, DDS)	KL.17305.033
<b>LCD BEZEL</b>		
	LCD BEZEL	62.QK4N7.001
<b>LCD COVER</b>		
	LCD COVER QHD 165 Hz	61.QP7N7.001
	LCD COVER FHD 165Hz	61.QP7N7.002
<b>LOWER CASE</b>		
	LOWER CASE	64.QP9N7.001

**Table 1-4. FRU List (Continued)**

Category	Description	Acer Part No.
<b>MAINBOARD</b>		
	Mainboard AN17-42 AMD GN21-X4 8GB R78845HS/GN21-X4/Vram8G	NB.QPA11.005
<b>MEMORY</b>		
	Memory HYNIX SO-DIMM DDRV 5600 8GB HMCG66AGBSA LF+HF 1nm, A-die 1Rx16	KN.8GB0G.082
	Memory SAMSUNG SO-DIMM DDRV 5600 16GB M425R2GA3PB0-CWM LF+HF 14nm P die	KN.16G0B.039
	Memory HYNIX SO-DIMM DDRV 5600 16GB HMCG78AGBSA LF+HF 1nm, A-die 1Rx8	KN.16G0G.039
	Memory SAMSUNG SO-DIMM DDRV 5600 8GB M425R1GB4PB0-CWM LF+HF 14nm P die	KN.8GB0B.077
<b>METAL</b>		
	HINGE L	33.QK4N7.001
	HINGE R	33.QK4N7.002
<b>PLASTICS</b>		
	CAP DECO	42.QK4N7.001
	HOLDER BATTERY 90W	42.QJLN7.003
<b>POWER CORD</b>		
	POWER CORD 2.5A 250V #Continental BK 1.8M	27.Q2KN7.018
	POWER CORD 2.5A 125V US BK 1.8M	27.Q2KN7.004
	POWER CORD 2.5A 250V #Australia BK 1.8M	27.Q2KN7.012






**Table 1-4. FRU List (Continued)**

Category	Description	Acer Part No.
	POWER CORD 2.5A 250V Danish/Continental BK 1.8M	27.Q2KN7.015
	POWER CORD 2.5A 250V Swiss BK 1.8M	27.Q2KN7.020
	POWER CORD 2.5A 250V UK BK 1.8M	27.Q2KN7.003
	POWER CORD 2.5A 250V #AF BK 1.8M	27.Q2KN7.023
	POWER CORD 2.5A 125V TWN BK 1.8M	27.Q2KN7.021
	POWER CORD 2.5A 250V #Italian BK 1.8M	27.Q2KN7.016
	POWER CORD 2.5A 250V CHINA PRC BK 1.8M	27.Q2KN7.014
	POWER CORD 2.5A 125V INDIA BK 1.8M	27.C5EN7.001
	POWER CORD 2.5A 125V JAPANESE BK 1.8M	27.Q2KN7.017
	POWER CORD 250V 1.8M BLACK FOR Argentine	27.Q3NN7.001
	POWER CORD 2.5A 250V Brazil BK 1.8M	27.Q2KN7.013
	POWER CORD 250V Hebrew 1.8M BLACK	27.Q4PN7.001
	POWER CORD 2.5A 125V USA BK 1.8M	27.Q2KN7.005
<b>SPEAKER/MICROPHONE</b>		
	SPEAKER R+L	23.QK4N7.001
	MICROPHONE	23.QP7N7.001
<b>THERMAL</b>		
	HEAT SINK	24.QP9N7.001
<b>TOUCHPAD</b>		
	TOUCHPAD MODULE NC.24611.09K	56.QP7N7.001
	TOUCHPAD MODULE NC.24611.09F	56.QP7N7.002
<b>WIRELESS LAN</b>		
	Wireless LAN AMD Wi-Fi 6E BT5.3 MT7922_RZ616: E AMD 2x2 M.2 2230 PCIe BLE	KE.WF60A.002

**Table 1-4. FRU List (Continued)**

Category	Description	Acer Part No.
<b>MISCELLANEOUS</b>		
	LCD ADHESIVE TAPE T=0.5MM FHD 144 Hz/QHD 165 Hz LCD	47.QK4N7.001
	LCD ADHESIVE TAPE T=1.0MM FHD 165Hz	47.QK4N7.002
	CONDUCTIVE TAPE	47.QK4N7.003
	ABSORBER W/INS MYLAR	47.QPKN7.001
	FOIL COMPOSITE W/ PAD	47.QMBN7.001
	FOIL CU W/ MYLAR, GRAPHITE SHEET	47.QJQN7.005
	RUBBER MICROPHONE	47.QK4N7.004
	MYLAR BATTERY CABLE	47.QJLN7.007
	ACETATE TAPE	47.A6XN7.003
	MYLAR FFC COONECTOR	47.KE4N7.004
	FOIL AL	47.QKLN7.001








**Table 1-4. FRU List (Continued)**

Category	Description	Acer Part No.
	ACETATE TAPE BATTERY	47.QLTN7.003
	INSULATOR MYLAR ON BATTERY CABLE	47.HUVN7.002
	RUBB SI TOP MIC	47.QP7N7.003
	TAPE KAPTON TOP MIC	47.QP7N7.004
	LCD ALIGNMENT MYLAR	47.QJLN7.008

# Screw List

---

Table 1-5. Screw List

Category	Description	Acer Part No.
	SCREW M2.5*8.0-I(BNI,NYLOK)STL	86.QJLN7.001
	SCREW M2*3.0-I(BZN,NYIOK)	86.M8NN7.001
	SCREW M2.0*4.0-I(BUWZN)IRON	86.SG507.002
	SCREW M2.5*3-I(BNI)(NYLOK)STEEL	86.AYJN7.001
	SCREW M2.5*5.0-I(NINYLOKD5.0T0.8)STL	86.A9WN7.002
	SCREW M2.0*2.0- I(BNI)(NY)IRON	86.G55N7.001
	SCREW M2.0*3.0-I(BZN)(NYLOK)IRON	86.GDEN7.001

# Software Update

---

## Updating your software

---

Please visit <http://go.acer.com/?id=17883>




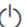


# Personal Data Removal

---

## Removing your personal data

---

There are three options to choose from:

- Option 1: Select **Start**  > **Settings**  > **Update & Security**  > **Recovery**. Under **Reset this PC**, select **Get started**. Open **Recovery settings**.
- Option 2: Restart your PC to get to the sign-in screen, then press and hold down the **Shift key** while you select the **Power**  icon > **Restart** in the lower-right corner of the screen. After your computer restarts, select **Troubleshoot** > **Reset this PC**.
- Option 3: Select **Start** , then press and hold down the **Shift key** while you select the **Power**  icon > **Restart** to restart your computer into Recovery Mode. After your computer restarts, select **Troubleshoot** > **Reset this PC**.