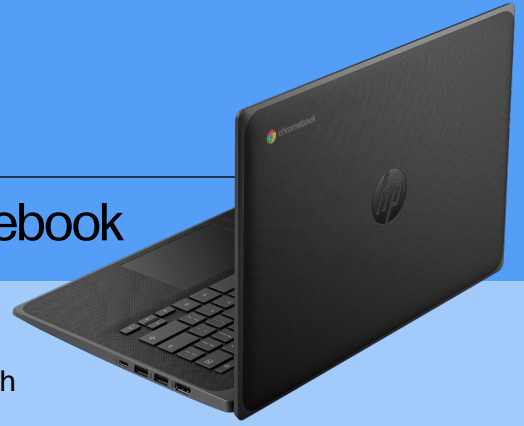


# HP Fortis 14-inch G11 Chromebook

## Do your best work with a ruggedized Chromebook

Easily navigate the hazards of unpredictable environments with the durable HP Fortis Chromebook. Built for productivity and collaboration, this cloud-based device features fast connectivity options<sup>1</sup>, a large, 14-inch display, and easy-to-use ChromeOS.<sup>2</sup>



### Engineered for durability.

Resist damage from daily use with this fan-less, durable Chromebook for schools and businesses, featuring ruggedly designed components that undergo MIL-STD 810<sup>3</sup> and drop testing.<sup>4</sup> The full-skirted anchored keyboard resists picking, spills, and dust.



### Productivity empowered.

Quickly access data and apps in the cloud with Wi-Fi 6E<sup>5</sup> and optional 4G LTE.<sup>6</sup> Stay productive with an Intel® N-series processor<sup>7</sup>, up to 16GB LPDDR5 RAM<sup>1</sup>, and long battery life—featuring HP Fast Charge for 90% charge in 90 minutes.<sup>8</sup>

### Immersive interaction.

Confidently engage with others on an optional FHD<sup>9</sup> touchscreen<sup>1</sup> and 180-degree lay-flat hinge. Keep work flowing and enable multitasking on additional screens with an HDMI port to connect displays, projectors, and other peripherals.<sup>10</sup>

### ChromeOS simplicity.

Breathe easy with the low-maintenance, highly manageable and secure ChromeOS. With automatic software updates through June 2033 and built-in anti-virus protection, your device stays protected and up to date.<sup>2</sup>

### Fast performance, connectivity, and responsiveness.

Get the solid combination of responsive performance and connectivity with an Intel® N-series processor<sup>7</sup> that lets you launch, create, and connect quickly and reliably.

### Advanced wireless connectivity.

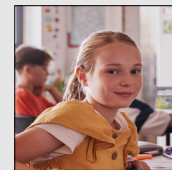
Stay connected, even in crowded wireless networks, with a fast, reliable wireless connection. This Fortis Chromebook's Wi-Fi 6E<sup>5</sup> or optional Wi-Fi 6<sup>11</sup> wireless LAN comes with MU-MIMO,<sup>12</sup> HP Extended Range Wireless LAN, and supports Bluetooth® technology.

### Work longer, charge faster.

Long battery life gets you through the day without plugging in. When the day goes longer, you can quickly recharge your Chromebook with HP Fast Charge. You'll get up to 90% battery life in just 90 minutes of charging.<sup>8</sup>



### Designed for:



Students



Frontline workers

### Recommended ecosystem<sup>28</sup>



HP USB-C / A Dock G2



HP US-C adapters



HP USB-C Travel Hub



HP USB Travel Mouse



# HP Fortis 14-inch G11 Chromebook

Form Factor / Design	Clamshell, 180-degree Hinge Flint Gray
OS	ChromeOS
Processor / Chipset	Intel® N-series processor <sup>7</sup>
Display / Graphics	14" diagonal, FHD (1920 x 1080), anti-glare, WLED UWVA, 250 nits, 45% NTSC, eDP 1.2, Bent type panel, Touchscreen <sup>14,16,29,30</sup> 14" diagonal, HD (1366x768), anti-glare, LED SVA, 250 nits, 45% NTSC, eDP, Bent type panel, Touchscreen <sup>14,16,29,30</sup> 14" diagonal, FHD (1920 x 1080), anti-glare, LED UWVA, 300 nits, 45% NTSC, eDP 1.2 Low-Power, Bent type panel <sup>14,16,29</sup> 14" diagonal, HD (1366x768), anti-glare, LED SVA, 250 nits, 45% NTSC, eDP, Bent type panel <sup>14,16,29</sup> Intel® UHD Graphics
Dimensions/Weight	12.9 x 9.0 x 0.86 in 33.0 x 23.0 x 2.2 cm Starting at 1.63 kg / 3.59 <sup>13</sup> lb
Touch / Pen	Optional HD / FHD touch
System Memory	4GB/8GB/16GB LPDDR5-4800 on-board
Storage Options	32GB/64GB eMMC, 128GB UFS <sup>31</sup>
Battery / Adapters	HP Fast Charge, 90% in 90 minutes <sup>8</sup> / AC adapter: 45W Adapter USB-C
Input / Output	(2) USB-C® (3.2 Gen 1, PD, DisplayPort™ 1.2) (2) USB Type-A 3.2 Gen 1 (1) HDMI 1.4 <sup>10</sup> (1) Headphone/Microphone combo jack SIM Card Slot <sup>15</sup>
Connectivity Options	WLAN: up to Wi-Fi 6E <sup>5</sup> (802.11 ax) + Bluetooth® 5.3 wireless card, MU-MIMO <sup>12</sup> , optional WWAN: 4G LTE CAT6 <sup>6</sup> , embedded eSIM <sup>17</sup> , HP extended wireless LAN <sup>18</sup>
Multimedia	(2) Speakers, dual array mic HD Camera <sup>14</sup>
Keyboard & pad	Full-size island-style Chrome keyboard (spill-resistant with HP Full-Skirted Anchored Key) / Clickpad
Manageability / Software	HP Classroom Manager <sup>19</sup> , Chrome Enterprise Upgrade <sup>20</sup> , Chrome Education Upgrade <sup>21</sup> , Zero-Touch Enrollment <sup>22</sup>
Security	Titan C security chip, HP Privacy Camera, Nano lock slot (Lock sold separately) <sup>32</sup>
Durability	Semi-rugged chassis, undergoes IP51 <sup>23</sup> , 19 MIL-STD 810 <sup>3</sup> tests, HP Total Test Process <sup>24</sup> , 122 cm drop onto plywood, Wipe-ability <sup>25</sup> , reinforced USB Type-C® power port, and 200 revolution tumble testing <sup>4</sup>
Sustainability	EPEAT® Gold in the United States <sup>26</sup> , TCO Certified, ENERGY STAR® Rated



# HP Fortis 14-inch G11 Chromebook

## Footnotes

1. Optional feature that must be configured at the time of purchase.
2. See <https://support.google.com/chrome/a/answer/6220366?hl=en> for more information.
3. MIL-STD testing is not intended to demonstrate fitness for U.S. Department of Defense contract requirements or for military use. Test results are not a guarantee of future performance under these test conditions. Accidental damage requires an optional HP Accidental Damage Protection Care Pack.
4. 122cm test on plywood and 76cm test on concrete. Drop test is not a guarantee of future performance under these test conditions. Any accidental damage requires an optional HP Accidental Damage Protection Care Pack.
5. Wi-Fi 6E requires a Wi-Fi 6E router, sold separately, to function in the 6GHz band. Availability of public wireless access points limited. Wi-Fi 6E is backwards compatible with prior 802.11 specs and available in countries where Wi-Fi 6E is supported.
6. Gigabit class Category 16 4G LTE module is optional and must be configured at the factory. Module designed for up to 1 Gbps download speeds as carriers deploy 5 carrier aggregation and 100Mhz channel bandwidth, requires activation and separately purchased service contract. Backwards compatible to HSPA 3G technologies. Check with service provider for coverage and availability in your area. Connection, upload and download speeds will vary due to network, location, environment, network conditions, and other factors. 4G LTE not available on all products, in all regions.
7. Multicore is designed to improve performance of certain software products. Not all customers or software applications will necessarily benefit from use of this technology. Performance and clock frequency will vary depending on application workload and your hardware and software configurations. Intel's numbering, branding and/or naming is not a measurement of higher performance.
8. Recharges the battery up to 90% within 90 minutes when the system is off or in standby mode, when used with the power adapter provided with the notebook, and no external devices are connected. After charging has reached 90% capacity, charging speed will return to normal. Charging time may vary +/-10% due to System tolerance.
9. Full high definition (FHD) content required to view HD images.
10. HDMI cables sold separately and not included.
11. Wireless access point and internet service required and sold separately. Availability of public wireless access points limited. Wi-Fi 6 (802.11 ax) is backwards compatible with prior 802.11 specs
12. Multiple-Input Multiple-Output (MU-MIMO) is a wireless technology that uses multiple transmitters and receivers to enhance data transfer. MIMO requires a MU-MIMO router, sold separately.
13. Weight will vary by configuration
14. HD content required to view HD images
15. SIM slot is not user accessible without WWAN configuration.
16. Sold separately or as an optional feature
17. eSIM is not user accessible without WWAN configuration.
18. Based on internal testing vs. previous generation product with 802.11ac wireless LAN module.
19. HP Classroom Manager is sold separately. Control and device locking from the teacher's desktop requires purchase of HP Classroom Manager for Teachers.
20. Chrome Enterprise Upgrade is sold separately and requires one-time setup, subscription, Google Admin Console, and your organization's domain. Please see <https://support.google.com/a/answer/60216>.
21. Chrome EDU Upgrade is sold separately and requires one-time setup, subscription, Google Admin Console, and your organization's domain. Please see <https://support.google.com/chrome/a/answer/9147838?hl=en>
22. Zero Touch Enrollment Service is sold separately. HP services are governed by the applicable HP terms and conditions of service provided or indicated to Customer at the time of purchase. Customer may have additional statutory rights according to applicable local laws, and such rights are not in any way affected by the HP terms and conditions of service or the HP Limited Warranty provided with your HP Product.
23. IP51 rating is not a guarantee of future performance under these test conditions. Accidental damage requires an optional HP Accidental Damage Protection Care Pack
24. HP Total Test Process testing is not a guarantee of future performance under these test conditions. Accidental damage requires an optional HP Accidental Damage Protection Care Pack.
25. See wipe manufacturer's instructions for disinfecting and the HP cleaning guide for HP tested wipe solutions at How to Sanitize Your HP Device Whitepaper: <https://h20195.www2.hp.com/v2/GetDocument.aspx?docname=4AA7-7610ENW>.
26. Based on US EPEAT® registration according to IEEE 1680.1-2018 EPEAT®. EPEAT® status varies by country. Visit [www.epeat.net](http://www.epeat.net) for more information
27. 100% outer box packaging made from sustainably sourced certified and recycled fibers. Fiber cushions made from 100% recycled wood fiber and organic material. Any plastic cushions are made from >90% recycled plastic.
28. Displays and peripherals sold separately.
29. Actual brightness will be lower with touchscreen or HP Sure View
30. Resolutions are dependent upon monitor capability, and resolution and color depth settings
31. For storage drives, GB = 1 billion bytes. Actual formatted capacity is less. Up to 18.0GB is not user accessible
32. Sold separately

© Copyright 2023 HP Development Company, L.P. The only warranties for HP products are set forth in the express limited warranty statements accompanying such products. Nothing herein should be construed as constituting an additional warranty. HP shall not be liable for technical or editorial errors or omissions contained herein.

Intel, Celeron and Intel vPro are trademarks or registered trademarks of Intel Corporation or its subsidiaries in the United States and other countries. USB Type-C® and USB-C® are registered trademarks of USB Implementers Forum. ENERGY STAR is a registered trademark of the U.S. Environmental Protection Agency. Chrome and Chromebook are trademarks of Google LLC. Bluetooth® is a trademark of its proprietor, used by HP Inc. under license.

