



## ICY BOX IB-1817M-C31

### External Type-C™ enclosure for M.2 NVMe SSD

#### Key features

- High-grade aluminium enclosure with innovative heatsink design
- Interface to host computer: USB 3.1 (Gen 2) Type-C™, up to 10 Gbit/s
- Supports PCIe 3.0 x2 data transfer rates of up to 1000 megabyte per second
- M-Key socket for NVMe SSDs, 22x 30/42/60/80 mm
- Provides an additional patented heatsink and thermal pad inside
- Activation of write protection via switch
- LED for power, access and write protection
- Supports Windows®, macOS®



#### Packing content

1x IB-1817M-C31 (drive not included), 1x Type-C™ to Type-C™ cable (20 cm), 1x Type-C™ to Type-A cable (20 cm), 1x Silicon thermal pad, 1x Heat sink, 1x Tool for write protection switch, 1x Screw driver, 1x Set of screws, 1x Quick installation guide

## Fast and mobile

With the help of the external USB 3.1 Type-C™ enclosure IB-1817M-C31 you can comfortably take one NVMe card with you wherever you go and keep it accessible. It allows access to M.2 SSDs of up to 2 TB with any host computer.

#### Technical data

<b>Model</b>	IB-1817M-C31
<b>Article no.</b>	60509
<b>EAN code</b>	4250078168911
<b>Brand</b>	ICY BOX
<b>Colour</b>	Grey
<b>Material</b>	Aluminium
<b>Interface to host computer</b>	USB 3.1 (Gen 2) Type-C™
<b>Transfer rate</b>	Up to 10 Gbit/s
<b>Length of cable</b>	20 cm
<b>Socket</b>	M-Key
<b>M.2 card size</b>	22x 30/42/60/80 mm
<b>M.2 interface</b>	PCIe 3.0 x2
<b>SSD capacity</b>	Unlimited

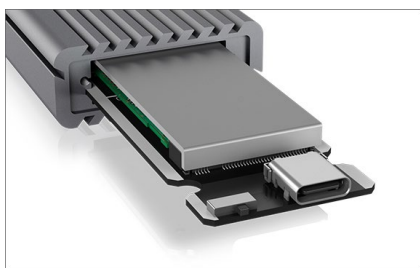
<b>Plug &amp; Play</b>	Yes
<b>Cooling</b>	Passive
<b>LED</b>	Power, write protection and access
<b>Chipset</b>	JMS583
<b>Power supply</b>	Bus powered
<b>Operating system</b>	Windows®, macOS®

#### System requirements

Your host computer must have a USB Type C™ interface.  
The IB-1817M-C31 also works with computers and notebooks with USB 3.0/2.0/1.1 Type-A interfaces.  
The enclosure also works on devices with a Thunderbolt 3 interface with the transfer rate of 10 Gbit/s specified by USB 3.1 (Gen 2).  
The Type-C™ interface can be connected with USB 3.0 or 2.0 standard in some notebooks and computers. The enclosure only supplies the full speed of 10 Gbit/s to USB 3.1 (Gen 2) Type-C™ interfaces. The following operating systems are supported: Windows®, macOS®

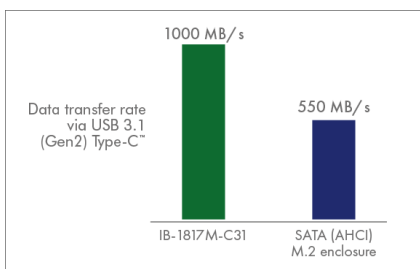


# ICY BOX IB-1817M-C31 External Type-C™ enclosure for M.2 NVMe SSD



## Keep it cool

The patented cooling plate transfers the resulting heat from the SSD to the housing and cools the SSD optimally. This prevents the early reduction of the transfer rate to protect from overheating. With the IB-1817M-C31, data can be sent permanently from A to B at maximum transfer rate of up to 10 Gbit/s.



## Time is valuable

The IB-1817M-C31 is compatible with M.2 cards of 30, 42, 60 and 80 mm length, operating system-independent and suitable for a variety of applications such as high-speed storage, cloning a drive or running a mobile operating system. All this happens with a data transfer rate with up to 1000 Mb per second. That is almost twice the transfer rate of a comparable SATA based enclosure.



## Click - Safe

With the IB-1817M-C31, sensitive data on the installed M.2 SSD can be protected from changes by a simple switch. The write protection switch can be moved to the desired position using the supplied mini tool and a small hand movement. Click - safe.

### Logistical data

**Packing unit:** 40 Stk./carton  
**Total weight:** 8.7 kg/carton  
**Gross weight (with packing):** 0.205 kg  
**Net weight:** 0.100 kg

**Dimension/carton:** 500x300x220 mm  
**Dimension (with packing):** 25x100x200 mm  
**Dimension of article:** 105x40x15 mm  
**Country of origin:** China